



**The  
GRACE BIBLE  
INSTITUTE**



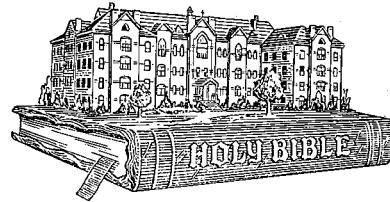
**1950-1951  
CATALOG**

# Grace Bible Institute

1515 South 10th Street

OMAHA 8, NEBRASKA

(Phone JACKSON 3377)



**Motto:**

*"Other foundation can no man lay than that  
is laid, which is Jesus Christ"*

## Catalog and Announcements

(Published by the Office of the Dean)

**1950-1951**

(1)



**Grace Bible Institute**

**Is Accredited by The Accrediting Association Of Bible  
Institutes And Bible Colleges, Collegiate Division.**

Listed in the 1949 Bulletin "Accredited Higher In-  
stitutions" of the United States Office of Education.

Approved by The Nebraska Department of Public  
Instruction for the training of veterans.

Listed by the United States Department of Justice  
for training of foreign students.

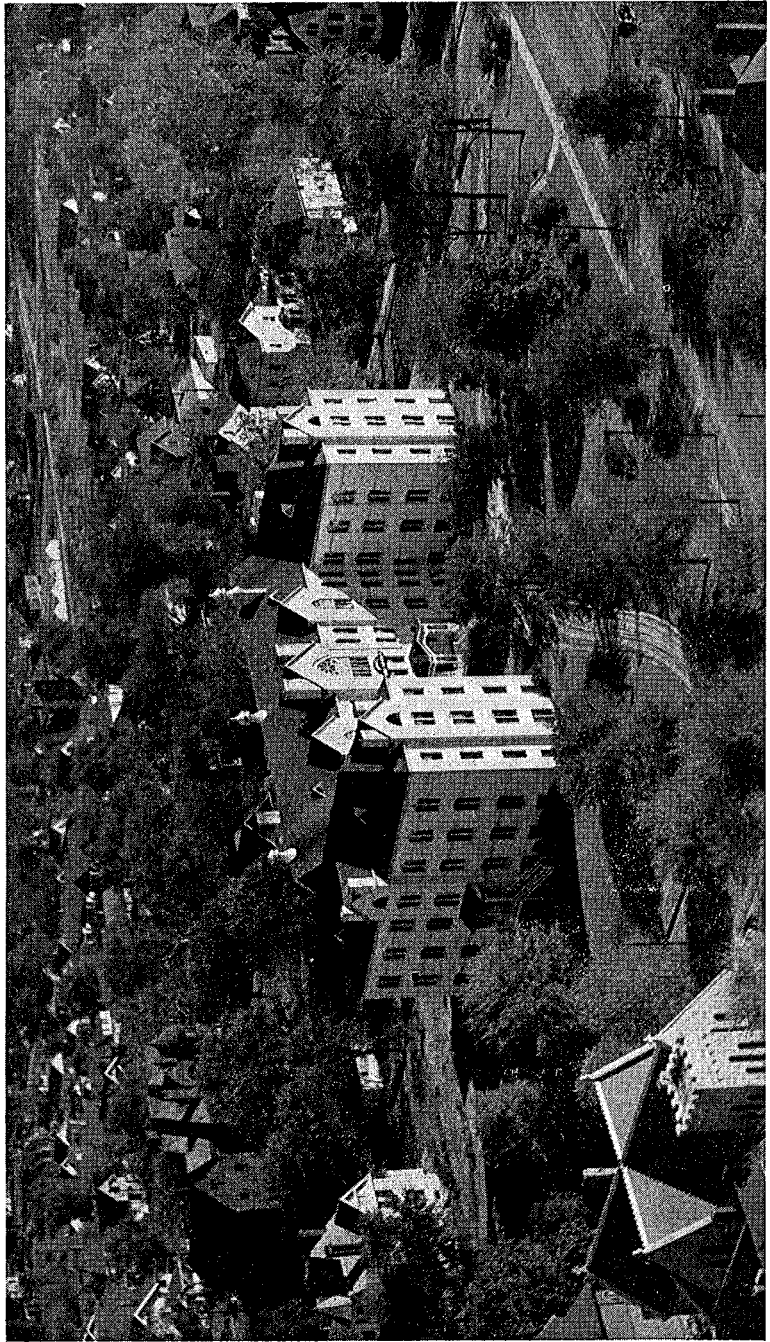
A member of The Evangelical Teacher Training  
Association.

Affiliated with The National Association of Evan-  
gelicals.



# TABLE OF CONTENTS

Accreditation .....	25
Advisory Council .....	9
Alumni Association .....	60
Analysis of enrollment .....	59
Application .....	26
Attendance Regulations .....	28
Auditors .....	27
Bachelor of Arts Requirements .....	36
Bible Conferences .....	20
Board of Directors .....	9
Book Store .....	23, 53
Calendar .....	5, 63
Courses Offered .....	29, 35
Course Schedules, Three-Year Courses .....	31-34
Course Schedules, Collegiate Course .....	37-41
Daily Schedule .....	20
Description of Building .....	19
Description of Courses .....	42-51
Doctrinal Statement .....	8
Electives in Music .....	28
Employment of Students .....	21
English Requirements .....	30
Entrance Requirements .....	25
Evangelical Teacher Training Association .....	25
Evening School .....	63
Extracurricular Requirements .....	28
Faculty Personnel .....	12-18
Field Representatives .....	9
Financial Information .....	23
Free Nights .....	52
Gospel Teams .....	53
Grading and Grade Points .....	27
Graduation Requirements .....	26, 29, 36
Historical Sketch .....	6, 7
Hospitalization .....	20
Hours of Study Required .....	27
Library .....	20
Load Carried .....	28
Macedonian Missionary Fellowship .....	52
Music Instruction, Private .....	51
Non-High School Graduates .....	30
Picnics .....	53
Practical Christian Work .....	20
Prayer Room .....	53
Private Tutorship .....	27
Refunds and Rebates .....	24
Register of Students .....	54-59
Rules and Regulations .....	21
Staff .....	11
Student Body Association .....	52
Student Streamers .....	52
Transcripts .....	26
Tuition .....	23
What to bring .....	21



An Air View of Grace Bible Institute

The Lord graciously and marvelously supplied the means through the generosity of His people so that on February 5, a day set aside for prayer, the papers were completed and the final payment was made in full. How we praise God for giving us this wonderful building and how we thank our many friends for their faithfulness in giving of the Lord's money to make this possible!

Towards the end of January the Presbyterian Theological Seminary was approached by the United States government regarding converting their Seminary building into an apartment house. We were then requested to vacate the Seminary as soon as possible. This was done during the week-end of March 25, when the student body and faculty were moved to our present location. We praise God for His wisdom and guidance in timing these events, so that we could so soon be permanently located.

In the years following, the Institute has shown a steady and healthy growth. The records of its seventh year show thirteen board members from five denominations, 62 advisory council members, two field representatives, 19 instructors, a staff of fifteen, 317 students, seven buildings and a plant valued at a quarter million dollars. How we praise God for the progress in each of these realms.

Graduates of Grace Bible Institute are today serving the Lord in the foreign and home mission fields and upholding a Christian testimony in various other walks of life. May God use their testimony for the completion of His purpose in calling out a people for His name in this age of grace.

While the Grace Bible Institute is operating particularly to meet the need of the young people of our denomination, it is in no way the purpose to limit the student body to those of one denomination exclusively. **Rather the school shall be open to all men and women of any denomination** who feel the call of the Lord to serve Him, and who desire to prepare for that work. The school is not governed by any denomination or conference, but by men of God who have at heart the spreading of the Gospel, and these covet the prayerful support of true Christians everywhere.

#### STATISTICAL GROWTH OF GRACE BIBLE INSTITUTE

1943-44 1944-45 1945-46 1946-47 1947-48 1948-49 1949-50

Students	40	93	168	278	312	331	317
Denominations and Groups	7	9	17	24	26	23	25
States and Countries Represented	12	13	14	18	21	19	19
Graduates	0	3	8	30	37	61	69
Faculty	6	7	12	16	16	17	19
Board of Directors	8	10	10	10	12	13	13
Advisory Council	14	36	38	43	54	62	62
Buildings	1	4	6	6	6	6	7
Net worth in thousands (end of school year)	25	39	51	78	243	261	

# DOCTRINAL STATEMENT

## I

We believe that the Scriptures of the Old and New Testaments are the infallible Word of God, a divine revelation, the original autographs of which were verbally inspired by the Holy Spirit, and that they are the supreme and final authority of faith and conduct. 2 Tim. 3:16,17; 2 Pet. 1:21.

## II

We believe in one God, eternally existing in three persons: Father, Son, and Holy Spirit. Matt. 3:16,17;28:19,20; 2 Cor. 13:14.

## III

We believe that Jesus Christ was begotten by the Holy Spirit, was born of a virgin, and is truly God and truly Man. Gen. 3:15; Matt. 1:18; Phil. 2:5-8.

## IV

We believe in the resurrection of the crucified body of our Lord, in His ascension into heaven in that body glorified, in His present life there for us as High Priest, in that "blessed hope," the personal, pre-millennial, and imminent return of our Lord and Saviour Jesus Christ for the Church, and in His "glorious appearing" with the Church to set up His earthly kingdom. Jn. 20:20; Acts 1:9-11; Heb. 4:14-16; Tit. 2:13; I Thess. 4:13-18; Acts 15:16.

## V

We believe that the Holy Spirit is a person, is co-equal with God in all His attributes, and is sent by the Lord Jesus Christ from the Father, to convict the world of sin, to regenerate, indwell, guide, and teach the believer, and to empower him to live in victory over sin. John 15:26; Jn. 16:7, 8, 13.

## VI

We believe that man was created in the image of God, but in the sin of the first Adam the whole human race fell, and apart from Christ, is spiritually dead and lost. Gen. 1:26; Rom. 5:12; Rom. 3:23.

## VII

We believe that Jesus Christ died a substitutionary death upon the Cross, by grace providing salvation for all who believe on Him, justifying them on the ground of His shed blood. Eph. 1:7; 2:8; I Pet. 2:24.

## VIII

We believe that all who by faith receive the Lord Jesus Christ as their personal Saviour become the children of God, that eternal life is a present possession, that at death their spirits depart to be with Christ in conscious blessedness, and that at Christ's coming for the Church their bodies shall be raised, and, together with the believers then living on the earth, transformed into the likeness of the body of His Glory. Jn. 1:12,13; 5:24, I Cor. 15:51.

## IX

We believe that all those who persistently reject Jesus Christ in the present life will after the thousand years be raised from the dead, and throughout eternity exist in a state of conscious and endless torment. Rev. 20:11-15.

## X

We believe that the Church consists of all those who, in this dispensation, truly believe on Jesus Christ, that it is the body and bride of Christ, and that its mission is to witness for Christ among all nations. Acts 15:14; Acts 1:8.

## XI

We believe in the reality and the personality of Satan, a subtle being who ultimately will be cast into the lake of fire. Rev. 20:10.

## XII

We believe in a consistent Christian life and abstaining from worldly practices, such as swearing of the oath, affiliation with secret societies, using courts for settling disputes among believers, taking personal vengeance and participating in carnal strife, and divorce as forbidden by the Lord. 1 Jn. 2:15-17; Rom. 12:2; James 5:12; 2 Cor. 6:14,17; I Cor. 6:7,8; Rom. 12:17-21; Rom. 13:9; Mat. 19:9.

# ADMINISTRATION

## Board of Directors

Rev. D. J. Unruh, Newton, Kansas (1953)	President
Dr. P. C. Hiebert, Hillsboro, Kansas (1951)	Vice-President
Rev. W. A. Regier, Salem, Oregon, (1950)	Secretary
Rev. August Ewert, Omaha, Nebraska (1953)	Treasurer
Rev. J. R. Barkman, Henderson, Nebraska (1950)	Member
Rev. H. E. Bertsche, Archbold, Ohio (1954)	Member
Rev. Theo. H. Epp, Lincoln, Nebraska (1950)	Member
Rev. H. P. Fast, Orienta, Oklahoma (1951)	Member
Rev. Frank S. Harder, Pandora, Ohio (1952)	Member
Rev. J. J. Kleinsasser, Yale, South Dakota (1951)	Member
Rev. P. A. Kliewer, Wolf Point, Montana (1954)	Member
Rev. Solomon Mouttet, Chouteau, Oklahoma (1952)	Member
Dr. C. H. Suckau, Omaha, Nebraska (1953)	Member

## Field Representatives

Rev. J. J. Esau	Omaha, Nebraska
Rev. P. P. Tschetter	Omaha, Nebraska

## Advisory Council

Rev. L. R. Amstutz	Mountain Lake, Minnesota
Mr. P. C. Andres	Newton, Kansas
Mr. John Auckland	Arkport, New York
Mr. W. M. Bartel	Portland, Oregon
Rev. J. W. Bergen	Goltry, Oklahoma
Rev. P. J. Boehr	China
Rev. H. D. Burkholder	Omaha, Nebraska
Rev. Paul Dahlenburg	Cordell, Oklahoma
Rev. Wm. Detweiler	Orrville, Ohio
Rev. George Dick	Bloomfield, Montana
Rev. H. H. Dick	Mountain Lake, Minnesota
Rev. J. R. Dick	Omaha, Nebraska
Rev. Walter J. Dick	Richfield, Pennsylvania
Rev. Clyde H. Dirks	Portland, Oregon
Rev. H. B. Dirks	Los Angeles, California
Rev. Edward Duerkson	Avon, South Dakota
Rev. H. J. Dyck	Elbing, Kansas



## Advisory Council (continued)

Rev. Marvin M. Eck .....	Africa
Rev. J. J. Esau .....	Omaha, Nebraska
Rev. Albert Ewert .....	Bridgewater, South Dakota
Rev. W. J. Flickinger .....	Muskogee, Oklahoma
Rev. J. A. Friesen .....	Springfield, South Dakota
Rev. J. J. Gerbrandt .....	Meade, Kansas
Rev. H. R. Harms .....	Meade, Kansas
Dr. Lando Hiebert .....	Hillsboro, Kansas
Rev. J. N. Hoepfner .....	Altona, Manitoba, Canada
Rev. David Hooge .....	Corn, Oklahoma
Rev. F. F. Jantzen .....	Paso Robles, California
Rev. G. H. Jantzen .....	Dallas, Oregon
Rev. L. W. Jantzen .....	India
Mr. N. P. Janzen .....	Fresno, California
Rev. J. C. Kaufman .....	Freeman, South Dakota
Dr. Milo Kaufman .....	Hesston, Kansas
Rev. Harley King .....	Paso Robles, California
Rev. Paul Kuhlmann .....	Omaha, Nebraska
Rev. Howard Landes .....	Bluffton, Ohio
Dr. P. R. Lange .....	Hillsboro, Kansas
Dr. L. Gilbert Little .....	Wichita, Kansas
Rev. V. E. Nickel .....	Wymark, Sask., Canada
Rev. Howard G. Nyce .....	Pretty Prairie, Kansas
Rev. Arthur Ortman .....	Warroad, Minnesota
Rev. Hellmuth Ortman .....	Munich, South Dakota
Rev. D. C. Pauls .....	Inman, Kansas
Rev. H. H. Quiring .....	Mountain Lake, Minnesota
Rev. Ben Rahn .....	Paso Robles, California
Rev. Alfred Regier .....	Los Angeles, California
Rev. D. A. Regier .....	Mountain Lake, Minnesota
Rev. J. J. Regier .....	Dallas, Oregon
Rev. W. H. Regier .....	Colby, Kansas
Rev. G. S. Rempel .....	Steinbach, Manitoba, Canada
Rev. A. H. Schultz .....	Quakertown, Pennsylvania
Rev. D. P. Schultz .....	Dallas, Oregon
Rev. G. P. Schultz .....	Chicago, Illinois
Rev. J. P. Suderman .....	Mountain Lake, Minnesota
Rev. J. A. Tieszen .....	Sioux Falls, South Dakota
Mr. A. F. Toavs .....	Wolf Point, Montana
Rev. J. J. Toews .....	Buhler, Kansas
Rev. Paul Tschetter .....	Butterfield, Minnesota
Rev. P. P. Tschetter .....	Omaha, Nebraska
Rev. F. V. Wiebe .....	Ponca, Arkansas
Rev. H. P. Wiebe .....	Mountain Lake, Minnesota
Rev. A. K. Wiens .....	Omaha, Nebraska

## Officers of Administration

C. H. Suckau, D. D. ....	President, on leave of absence
H. D. Burkholder .....	Acting President
Paul Kuhlmann .....	Dean, Registrar
August Ewert .....	Business Manager
John Schrag .....	Dean of Men
Marion Stuart Stanford .....	Dean of Women
John R. Dick .....	Practical Work and Extension Director
James P. Davies .....	Director of Music Department
Averno M. Rempel .....	Librarian

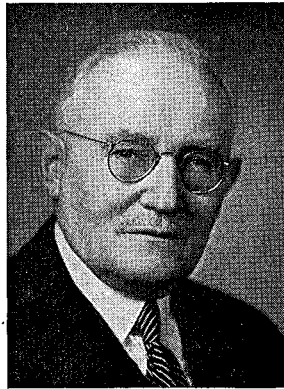
## Standing Committees of the Faculty

Administration of the School .....	Acting President, Dean, Business Manager
Committee of Admissions .....	Dean, Dean of Men, Dean of Women
Hospitalization Committee .....	Bus. Manager, Dean of Men, Dean of Women
Curriculum Committee .....	Dean, Department Heads
Library Committee .....	Librarian, Dean, Department Heads

## The Staff

Secretary to the President .....	Mrs. Richard Tschetter
Secretary to the Dean .....	Esther Penner
Secretary to Practical Work Director .....	Katherine E. Eymann
Assistant to Business Manager .....	Irene Ewert
Assistant Librarian .....	Rev. Ernst Kuhlmann
Mimeographing, Mailing .....	Jean Bonebrake
Supervisor of Child Evangelism .....	Marie Harms
Matron .....	Ella Berg
Dietician .....	Hilda Harms
Cooks .....	Helen Fast, Hulda Deckert, Betty Ann Jones, Alvina Schroeder, Mrs. Anna Wiens
Custodian .....	A. C. Siebert

## Faculty



**C. H. SUCKAU**

**President (On leave of absence).**

Graduate Bethel College Bible Course, 1906; Graduate Union Missionary Training Institute, 1909; A. B., Bethel College, 1921; D. D. Wheaton College, 1938. Positions: Missionary to India, 1909-1928; Pastor, First Mennonite Church, Berne, Indiana, 1928-1943; Grace Bible Institute, 1944-

**HAROLD D. BURKHOLDER**

**Acting President**

**Instructor in Bible**

Graduate Moody Bible Institute, 1938; Graduate Reformed Episcopal Seminary, 1945; A. B., George Pepperdine College, 1947; B. D., Reformed Episcopal Seminary, 1947; M. A., George Pepperdine College, 1949. Positions: Pastor, East Swamp Mennonite Church, Quakertown, Pennsylvania, 1938-1945; Pastor, Immanuel Mennonite Church, Los Angeles, California, 1945-1949; Grace Bible Institute, 1949-



**PAUL KUHLMANN**

**Dean, Registrar**

**Instructor in Bible, Prophecy**

Graduate Bible Institute of Los Angeles, 1935; Graduate Central University, 1942, 1946; Wheaton College, 1945; A. B. Midland College, 1950. Positions: Missionary to China, 1936-1941; Principal, Tangshan Bible Institute, China, 1938-1941; Instructor, 1941-1942, and Superintendent, Oklahoma Bible Academy, 1942-1943; Grace Bible Institute 1943-



## Faculty

**AUGUST EWERT**  
Business Manager

Instructor in Missions

Graduate Moody Bible Institute, 1926; Wheaton College, 1928-1929; College of Chinese Studies, Peking, 1929-1930; A. B., Bethel College, 1939. Positions: Missionary to China, 1929-1941; Pastor, Gospel Mennonite Church, Mountain Lake, Minnesota, 1942-1946; Grace Bible Institute, 1946-



**JOHN SCHRAG**  
Dean of Men

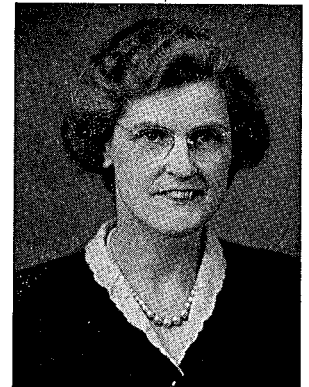
Instructor in Philosophy, Psychology

Hesston College and Bible School, 1924-1925; Bethel College, 1925-1927; A. B., Wheaton College, 1929; Graduate study, University of Kansas, 1929-1932, A. M., 1931; University of Chicago, 1932-1933. Positions: Teacher, Public School, 1927-1928; Instructor, Wessington Springs College, 1934-1935; Instructor, John Brown University, 1935-1945; Grace Bible Institute, 1945-

**MARION STUART STANFORD**  
Dean of Women

Instructor in Biological Science

A. B., Albany College, 1917; Graduate study, Columbia University, N. Y., 1928-1929; Oregon State College, 1932, 1935, 1938, 1941, 1944. Positions: Teacher, Lebanon High School, 1917-1918; Albany Senior High School, 1918-1945; Grace Bible Institute, 1945-



## Faculty

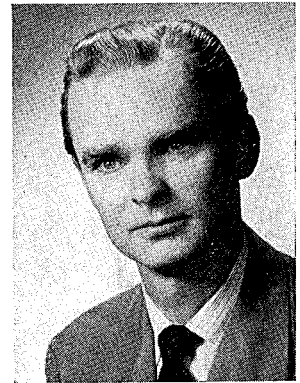


**JOHN R. DICK**  
Practical Work and Extension Director  
Instructor in Bible, Doctrine

Graduate Winnipeg Normal School, 1930; Graduate Moody Bible Institute, 1938; A. B. Morningside College, 1945; A. M., University of Omaha, 1950. Positions: Teacher in public school in Canada, 1930-1936; Pastor, E. M. B. Church, Henderson, Nebraska, 1939-1941; Instructor, Henderson Bible School, 1939-1941; Pastor, E. M. B. Church, Luton, Iowa, 1941-1943; President, E. M. B. Conference, 1948-; Grace Bible Institute, 1943-

**JAMES P. DAVIES**  
Director Music Department  
Instructor in Music Theory, Voice

A. B., John Fletcher College, 1936; Graduate Study, Minneapolis College of Music, 1941; University of Minnesota, 1944. Positions: Head of Music Department, Northwestern Schools, 1936-1945; Member, Faculty and Radio Staff, Moody Bible Institute, 1945-1947; Director of Music Department, Grand Rapids School of the Bible and Music, 1947-1948; Grace Bible Institute, 1949-



**AVERNO M. REMPEL**  
Librarian

A. B., University of Saskatchewan, 1940; B. Ed., University of Saskatchewan, 1949; Graduate study, University of Omaha, 1949-1950. Positions: Principal, Lipton, High School, 1941-1943; Teacher, Steinbach Collegiate Institute, 1943-1946; Principal of School, Steinbach, 1943-1949; Grace Bible Institute, 1949-

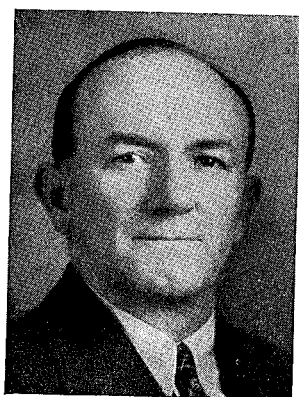


## Faculty

### MABEL E. AMSTUTZ

Instructor in Piano

B. S. M., Bluffton College, 1948. Positions: Teacher and Music Instructor, Blanchard Township Schools, Gilboa, Ohio, 1943-1946; Teacher and Music Supervisor, Beavertown Schools, Beavertown, Ohio, 1946-1947; Grace Bible Institute, 1947-



### HENRY W. BERG

Instructor in Voice

A. B. Pomona College, 1914; Mus. B., University of Kansas, 1928; Graduate study, Horner Institute, 1921; University of California, 1922; San Francisco State Teacher's College, 1932; Juilliard School of Music, 1942; University of Kansas, 1943; Dr. Granville, Chicago, 1944. Positions: Teacher in Hilo Boarding School, Hilo, Hawaii, 1915-1918; Professor, Tabor College, 1920-1926, 1928-1932; Professor, Bob Jones College, 1936-1945; Grace Bible Institute, 1945-

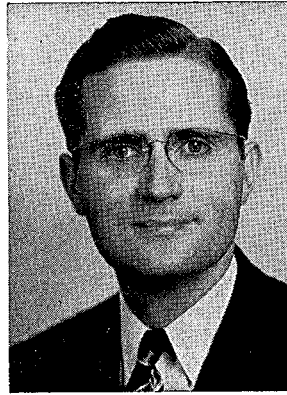
### RUTH BIXEL

Instructor in Music Theory, Piano

A. B. Bluffton College, 1932; B. S. M., Bluffton College, 1936; M. A., Ohio State University, 1940; University of Colorado, 1946; Syracuse University, 1950. Positions: Instructor, Ingleside Seminary, 1928-1931, 1932-1933; Music Supervisor in Public Schools, Bluffton, Ohio, 1933-1936; Instructor, Harshman School, Dayton, Ohio, 1936-1938; Instructor, Fort Wayne Bible Institute, 1940-1941; Supervisor of Music in Public Schools, East Canton, Ohio, 1941-1942; Instructor, Greenville College, 1942-1944; Grace Bible Institute, 1944-



## Faculty



**JOHN W. BOEHR**

*Instructor in Bible, History, Voice*

A. B., Bluffton College, 1942; Dallas Theological Seminary, 1942-1944; Western Reserve University, 1945; B. D., Reformed Episcopal Seminary, 1946; Graduate study, University of Omaha, 1947, 1948. Positions: Pastor, First Mennonite Church, Ransom, Kansas, 1944-1945; Grace Bible Institute, 1946-

**MARIE DYCK**

*Instructor in English, Typing*

A. B., Bethel College, 1939; Graduate study, University of Omaha, 1948, 1949. Positions: Teacher, Public Schools, 1934-1937; 1939-1948; Grace Bible Institute, 1948-



**C. M. GEORGE**

*(on leave of absence)*

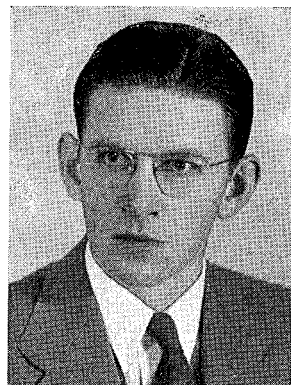
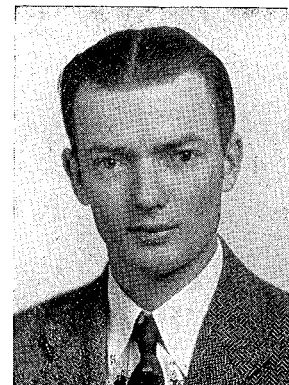
Graduate Moody Bible Institute, 1943; Wheaton College, 1944, A. B., Midland College, 1950. Positions: Grace Bible Institute, 1943-

## Faculty

### EDWARD T. SCHELLENBERG

Instructor in Bible, Greek

Th. B., Bible Institute of Los Angeles, 1942; A. B., Tabor College, 1944; Th. M., Dallas Theological Seminary, 1947. Positions: Superintendent and Instructor, Church Bible Classes, M. B. Church, Shafter, California, 1947-1949; Grace Bible Institute, 1949-



### JOSEPH W. SCHMIDT

Instructor in Bible, Speech, Archeology

Tabor College, 1940-1942; McPherson College, 1942; Grace Bible Institute, 1945-1947; University of Omaha, 1945-1947, A. B., 1947. Th. M., Central Baptist Theological Seminary, 1950. Positions: Teacher, Public School, 1942-1943; Student Pastor, Kent, Iowa, 1945-1947; Pastor, Nettleton Church, Nettleton, Missouri, 1948-1950; Grace Bible Institute, 1950-

### A. K. WIENS

Instructor in Bible, History

A. B., Fresno State College, 1933; South Western Seminary, 1943-1944; A. M., University of Southern California, 1949. Positions: Teacher and Principal in public school, 10 years; Missionary to China, 1934-1941, 1947-1948; Pastor, K. M. B. Church, Yale, South Dakota, 1944-1947; Grace Bible Institute, 1949-





## Special Instructors



**C. DISTEFANO, M. D.**

**Instructor in Medical Subjects**

B. S., Colgate University, Hamilton, N. Y., 1921;  
M. D., University of Nebraska, Lincoln, Ne-  
braska, 1925. Positions: General practice of  
medicine in Omaha, 1926- ; Grace Bible In-  
stitute, 1945-

## Visiting Lecturers

**DR. L. GILBERT LITTLE, M. D.**

**Christian Counseling**

**MRS. EINAR STEFFARUD**

**Visual Aids**

## Additional Faculty Members

An additional faculty member is being engaged for teaching in the field of Christian Education. Announcement will be made in the "Grace Tidings."



**An air view of the heart of Omaha.**

(The Institute is located a few blocks to the right of the upper right hand corner, this side of the Missouri river).

# GENERAL INFORMATION

## Purpose of the Institute

As our Lord was about to leave this earth to take up His heavenly ministry, He committed the work upon earth to His disciples, saying: "Go ye into all the world and preach the Gospel to every creature"; "Go ye therefore and make disciples of all nations"; "Ye shall be witnesses unto me." To witness to the saving power of Christ requires preparation. It means to be both Word-filled and Spirit-filled. The objective of the Grace Bible Institute therefore is to train and send forth men and women who in their lives shall express the following characteristics:

1. A thorough knowledge of the Word of God whereby they may lead others to Christ and with wisdom instruct them to grow in grace;
2. A Spirit-filled life with a passion to win the lost;
3. A willingness and zeal to serve the Lord in their home church or wherever called by Him.

## Location and Advantages

Omaha is a city of 274,000 population (Chamber of Commerce, January, 1949). It is near the geographical center of the United States and lies in the heart of a great agricultural section of our country. Omaha ranks first among American cities in the production of butter, lead, and alcohol, and is the second largest meat packing center. In the field of transportation it is the fourth largest railroad center in the United States, the hub of ten trunk lines. Busses from all directions converge upon the city on five federal and many state highways. In the city itself an intricate system of 28 bus and street-car lines provide ready transportation to any part of the city. Opportunities for earning are thus exceptionally good for both men and women, and in a city of its size all varieties of opportunities for practical experience in Christian work present themselves.

The Institute itself is located in a residential section of the city five blocks south of the Railway station and within walking distance of the main business district. The property covers the major portion of a city block.

## Residence Facilities

The main Institute building consists of a central structure and two side wings. On the main floor will be found guest rooms, class rooms, offices, and a well furnished reception room. On the third and fourth floors will be found the ladies' dormitories. These are heated with steam and are provided with all modern conveniences. Most rooms have hot and cold water, a closet, a bed, a dresser, a table, and two chairs. Pillows, sheets and pillow cases are furnished by the school, but curtains, which vary in size, towels, blankets, and spreads must be supplied by the student.

On the first floor in the south wing are additional class rooms and a prayer room. In the central structure are the kitchen and dining room. In the north wing are a spacious laundry and drying room and the caretaker's apartment.

Single men reside in two dormitories maintained by the school or in private homes near the Institute. Both dormitories provide laundry facilities for the men.

All unmarried men and women, whose homes are not in Omaha are required to live in the dormitories, and all married couples desiring to rent a temporary home are required (except by special permission) to live in apartments furnished by the school as long as they are available.

The Institute also offers free hospitality in the form of lodging and meals to visiting ministers and missionaries.

#### **Practical Christian Work**

Effective training for Christian service demands practical experience. Omaha affords many splendid opportunities for such experience. Each student will receive assignments for several hours of practical Christian work each week. Students go out to hold services on the street, in hospitals, jails, factories, churches, Sunday Schools, missions, or wherever needy souls are found. A special effort is made to give ministerial students the opportunity of supplying pulpits in various churches in and near Omaha. The department also offers special services to students on their assignments in the form of complete files of object lessons, pictures for story telling, flannelgraphs, etc.

#### **Mid-Term Bible Conferences**

In each semester, immediately after the mid-semester examinations, one week is set aside for special meetings. During these days students have the opportunity of hearing representatives from many fields of service speak. In fall, the Bible Conference will feature evangelism and systematic Bible study, while in spring, the Missionary Rally will bring missionaries from various parts of the world to present the need for workers. These conferences are intended to build up the spiritual atmosphere of the school, and help students find their God-appointed fields of service.

#### **Library**

The Institute has at its disposal a very serviceable reference and research library. Several thousand of the most reliable books have been acquired by the Institute during the past years through gifts and purchase. Besides these, many books from the 20,000 volume library of the former Presbyterian Theological Seminary have been made available to us by the kindness of the Seminary Board of Directors. Available also are over one hundred current Christian magazines and periodicals. Such a library is a real asset to the serious minded student who desires to get the most out of the time spent in the study of God's Word. The library, located in a separate library building is open daily, except Sunday, and the reading room affords a quiet place of research and meditation.

#### **Daily Schedule**

Students arise in time to clean their rooms, spend a period of time alone with God, have breakfast, and begin classes at 7:55. There are four class periods during the forenoon with a devotional period from 9:45 to 10:05 between these. Classes end at 11:55. This schedule gives the student a maximum opportunity to assume employment responsibilities at noon, in the afternoons, or in the evenings. Evening study hours, from 7—10, are observed five nights of the week and the students retire at 10:30, with the exception of Friday and Sunday when students may retire at 11:00. Special late light privileges may be granted by permission of the Dean of Men or Dean of Women.

#### **Hospitalization**

The Grace Bible Institute maintains a hospitalization plan, which provides hospitalization to faculty, staff, and student for 30 days with

a year. All students paying the hospitalization fee are covered by this plan without additional cost to them. Families pay a small additional fee to cover members not enrolled in school. As the maintenance of this plan depends upon the cooperation of all, no refunds of the hospitalization fee, however, will be granted to those already members of another plan or to those not desiring to enroll.

### **Student Employment**

The student who comes with adequate resources to pay all his expenses will thereby conserve time and strength for his studies, and has a decided advantage. When this is not possible, we strongly urge prospective students to come with sufficient funds to enable them to attend school without working more than three hours a day.

Opportunities have thus far been plentiful for both men and women to find work in homes, hospitals, cafes, stores, etc. The Institute also offers a limited number of part-time positions to students.

New students are limited to a maximum of 20 hours of work per week for their first semester. This means that to meet the expenses of the first semester they should have some resources available or the assurance of assistance from some relative or friend.

Students of the collegiate course will find that requirements of the course are such that it may be difficult to maintain a full working schedule. We, therefore, strongly advise the prospective student of this course to be prepared to assume a reduced working schedule.

As a rule, if a student must work more than 27 hours a week, or is weak in health, he will be asked to take a reduced schedule.

### **General Regulations**

It is expected that students will cheerfully submit to the regulations which govern the educational, social, and spiritual life of the school, and thus help to create and uphold the highest spiritual standards.

Any student who persistently disregards any of the rules of the Institute, or whose presence undermines the spiritual atmosphere of the school, will be asked to withdraw.

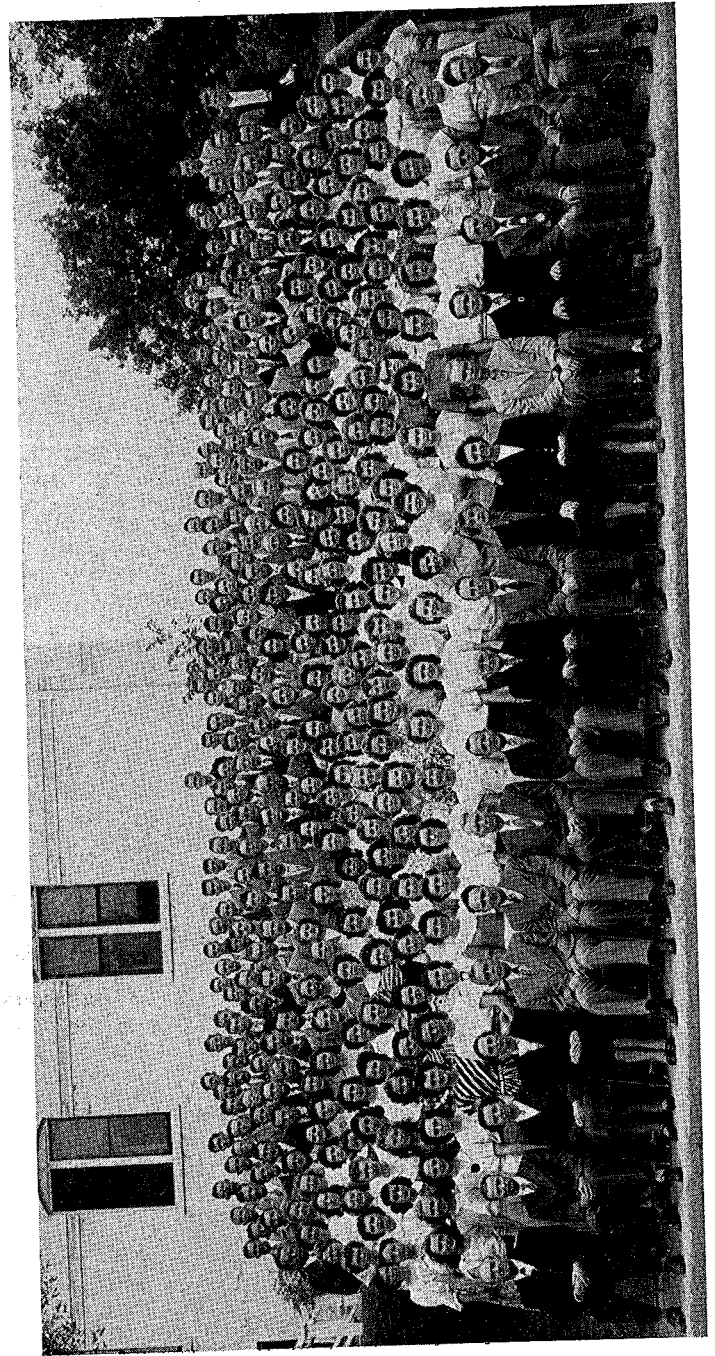
The use of tobacco or liquor in any form is forbidden. Students also are expected to refrain from worldly amusements, attendance of theaters or movies, and other unclean habits that defile mind and body. "Make up" on the campus, or "dress up" for parties is discouraged as not being in keeping with the spirit of the Institute.

Students desiring to bring their cars, may use the same only with special permission of the Dean of Men.

A complete outfit of modest, but serviceable clothing should be brought by each student. We wish to discourage the wearing of elaborate, fashionable, or expensive clothing.

### **What to Bring**

Bring a well bound Bible with not too small type (the large size Scofield Reference Bible is highly recommended), a good quality pen, some good Biblical reference books, and loose-leaf notebooks. For your rooms you will need blankets or quilts, towels, a bed-spread, and curtains which vary in size. (Shades are part of the school equipment.) Supply yourself with a warm coat and overshoes. All the rooms have a dresser with a mirror. For your convenience you should also bring an alarm clock and an electric iron. Bibles, textbooks, commentaries, concordances, Bible dictionaries, as well as a good dictionary of the English language, may be obtained upon arrival through the Grace Book Store.



Faculty, Staff, and Student Body, Fall, 1949.

# FINANCIAL INFORMATION

As a training school for Christian workers, the Institute seeks to keep all expenses at a minimum in order not to bar those of limited means from attending. To maintain certain academic standards, however, a considerable outlay of finances is involved. As a result a moderate tuition and several lesser fees are charged. All fees and prices are subject to change.

## **Tuition and Registration Fees**

\$50.00 per semester—Tuition, 10 to 16 hours.

5.00 per semester hour—Tuition, less than 10 hours and for each hour over 16 hours.

\$13.00 per semester—Registration fees. (Includes registration, \$3.00; library fee, \$3.00; Hospitalization fee, \$4.00; Student Activity fee, \$3.00. The last includes a copy of the "Charis".)

1.00—Late registration.

Except for tuition, no difference is made in the payment of fees between full and part time students.

## **Room and Board**

All single students whose homes are not in Omaha are required to room and board in the school's dormitories. To live in the school's dormitories, however, a student must carry a minimum load of 10 semester hours. Rates for room and board are as follows:

\$7.00 per week—Board when paid in advance. (Otherwise \$8.00)

3.00 per week—Room with two or more in room.

3.50 per week—Room for single person.

Included in the room rent is a maintenance fee of 50¢ per week. Students who do not pay room rent will pay a non-resident fee. See below.

## **Books and Supplies**

The Grace Book Store, operated in connection with the Institute, maintains a reasonable stock of Bibles, textbooks, reference material and student supplies. Estimated cost of books and supplies per semester is \$15.00 to \$25.00.

## **General Regulations**

All expenses are to be paid IN ADVANCE, and the student should where possible come to the Institute with sufficient funds to pay all fees, purchase the necessary books and take care of any other expenses which may be incurred until he is satisfactorily placed in his work.

Students, who, after their first semester at the Institute, are unable to pay the tuition fee in full, may defer payment upon proper arrangement with the Business Manager. Where students fail to pay the tuition fee in full on registration day, a cumulative late payment fee of \$1.00 per month or fraction thereof will be required. Registration and laboratory fees must be paid in full on registration day.

Students who do not live in the school's dormitories pay a non-resident fee. The non-resident fee for a study load of 10-16 semester hours is \$9.00 per semester, if paid on registration day. (\$1.00 extra, if payment is deferred.)

Any student whose account exceeds \$25.00 must make special arrangements with the Business Manager in order to remain in school.

No student will be permitted to take private music lessons unless he is able to keep his regular accounts paid up.

All expenses for room and board will be figured on the basis of 18 weeks per semester. Individual student meals will be figured on the basis of 30¢ for breakfast, 45¢ for lunch, and 55¢ for

dinner. Where certain meals are regularly missed because of employment exemption from payment may be applied for through the Business Manager, and students will pay only for meals actually taken. When meals are missed because of practical Christian work assignments, special forms furnished by the practical work department will enable the student to receive refunds covering such absence.

All graduating students will pay the diploma or degree fee at the beginning of their final semester. Diplomas and transcripts are issued only if all financial obligations toward the school are fully met.

#### Refund Schedule

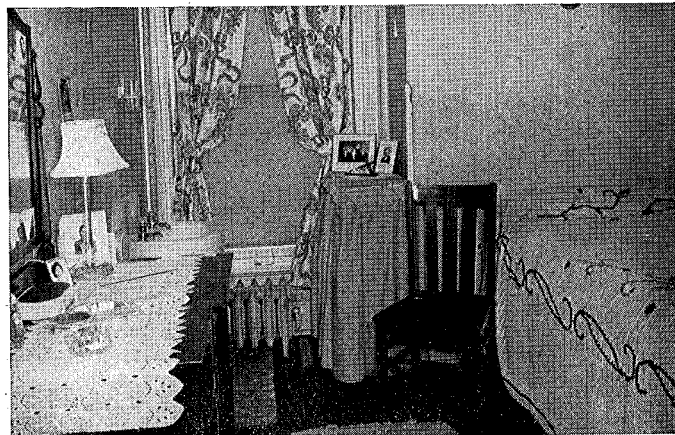
Since all fees are due and payable on registration day, no refund will be granted to a student who withdraws from school except in the case of the tuition fee. Refund of the tuition fee will depend upon the length of time a student has been in attendance. The percentage of tuition retained will be as follows:

2 weeks or less—	20%
2 to 3 weeks—	40%
3 to 4 weeks—	60%
4 to 5 weeks—	80%
over 5 weeks—	100%

#### Special Fees

The following is a schedule of special fees payable only by those students to whom they apply:

- \$9.00 per semester—Non-resident fee, 10 hours or over.
- 1.00 per semester hour—Non-resident fee, less than 10 hours.
- 2.50 per semester hour—Auditor tuition fee.
- 1.00—Auditor registration fee.
- 1.50 per half hour period—private music instruction.  
(\$1.00 to music students of Bible Music course or Music Minor of Degree course.)
- 5.00—Laboratory fee, Science class.
- 2.00 Laboratory fee, Photography class.
- 4.00—Diploma or certificate.
- 6.00—Degree
- 2.00—Diploma of Evangelical Teacher Training Association.
- 6.00 per hour—Courses by private tutorship (subject to approval of the Dean.)
- 1.00—Transcript of credits (after the first).



—||—  
A room in the  
dormitory

—||—

# ACADEMIC INFORMATION

## Accreditation and Standing

Grace Bible Institute is an accredited member of the Accrediting Association of Bible Institutes and Bible Colleges, collegiate division, and is listed in the 1949 edition of "Accredited Higher Institutions" issued by the United States Office of Education.

Grace Bible Institute is also approved as a school of theology by the Nebraska Department of Public Instruction for the training of discharged service men and women under the Service Men's Readjustment Act of 1944 (G. I. Bill of Rights).

Grace Bible Institute is listed by the United States Department of Justice as acceptable for the training of students from foreign countries.

During the recent war, Grace Bible Institute was recognized by the Selective Service System as a theological and divinity school for the training of students preparing for the ministry.

Grace Bible Institute is also a gold seal member of the Evangelical Teacher Training Association and its graduates, who have completed the requirements of the standard teacher training course, are entitled to receive the gold seal diploma of that association.

Grace Bible Institute or its department directors hold membership in the National Association of Evangelicals, the National Education Association, and the American Association of Collegiate Registrars.

## Courses Offered

In order to meet the variety of needs, Grace Bible offers two types of courses

1. The **Three Year Courses**, leading to a diploma or certificate.
2. The **Collegiate Courses**, leading to the A. B. in Bible degree.

## Entrance Requirements

### 1. High School Preparation

Because the Lord does call into His service those who have been denied the privilege of education and uses them in winning souls, it is the desire of the Institute not to refuse admission to any of a mature age who feel the call of the Lord because of lack of previous education. However, to maintain our scholastic standards, all courses are adjusted to the abilities of those with a high school background. Therefore the entrance requirements for our three-year and collegiate courses include high school graduation. If the student is not a graduate of a four-year high school or its equivalent, additional courses in English may be required and he will be awarded the certificate of the school. Because of limited dormitory and class room space, however, such students can be accepted only on a 5% quota basis.

### 2. Christian Character

It is assumed that those who come to the Institute are not only saved, but are definitely committed to God's will for their lives, and have a set purpose to prepare themselves to serve Christ. They should show willingness to work, to be taught, criticized, guided and helped. To assure some degree of spiritual maturity, all applicants should personally know Christ as Saviour for a period of at least one year.



### 3. Age

Minimum age for admission is 18 years. Special exceptions to this may be made if the applicant is a graduate of a four-year high school.

It is expressly encouraged that non-high school graduates below 20 will complete their academic work before enrolling at the Institute.

### 4. High School Transcript

At the time the student applies for admission, he should also arrange to have a transcript of his high school credits sent. This record must be in the hands of the school, before final word of admission to regular standing can be given.

### 5. Application

Application for admission should be made on official blanks furnished by the school, and be in the hands of the Dean of Men, or the Dean of Women at least two weeks before the opening of school. Since the Institute can accept only a limited number of non-high school graduates these are encouraged to apply several months in advance. The student shall fill out the application forms in full, enclose an application fee of \$1.00, and include a snapshot of himself. After the references have been heard from, and a transcript of his previous work is received, the student will be advised of the action of the Institute. The application fee will be credited to the registration fee, but will be retained by the Institute if the student fails to register as expected. All necessary forms may be obtained by writing to the Dean of Men or the Dean of Women, Grace Bible Institute, 1515 So. 10th Street, Omaha, Nebraska.

### Advanced Standing

Students who have completed work in another Bible Institute, College, or Seminary may apply for advanced standing upon the presentation of an official transcript from the school previously attended. Work done will be evaluated on the following basis:

1. All credits transferred must fit into the general educational program of the Institute.
2. Credits earned below the age of 18 will not be accepted unless the student was a high school graduate.
3. Credits earned in other accredited schools of collegiate level will be accepted at face value.
4. Credits earned in schools, accredited in the intermediate division by the A.A.B.I.B.C., will be accepted at face value provisionally, subject to validation by demonstrating the ability to maintain a "C" average (grade point average of 1) in 15 semester hours of work.
5. Credits earned in an unaccredited college or Bible school may be validated by one of two methods at the discretion of the Dean:
  - (a) Comprehensive examination over each subject for which credit is desired.
  - (b) Provisional acceptance of not more than half credit, from transcripts showing at least a "C" average, subject to validation by demonstrating the ability to maintain a "C" average (grade point average of 1) in 15 semester hours of work.

### Graduation Requirements

A student with a high school education will be granted a **diploma** for the course he has pursued when all the requirements of the Institute have been met.

A student who has not previously completed a high school course will be graduated with a **certificate** for the course he has pursued.

The following are the graduation requirements of the Institute:

1. **Scholastic Rating.** The student must satisfactorily have completed the required subjects of the course chosen, be in possession of the prescribed number of credits, and have earned at least one grade point per semester hour credit. Substitution of subjects will be permitted only with approval of the Dean.
2. **Character and Doctrine.** In addition to receiving satisfactory scholastic rating in his course, the student must also give evidence of strong Christian character and soundness of doctrine.
3. **Practical Christian Work.** As the Institute seeks to train for effective service, it is expected that a student also show commendable zeal and faithfulness in his practical Christian work assignments. One extracurricular credit will be required toward graduation for every semester's attendance at the Institute, and each such credit will earn one grade point.
4. **300 Bible Verses**

All students at the time of graduation are required to give evidence that they are able correctly to quote and give reference of 300 Bible verses, of which 250 shall be standardized verses and 50 of their own choosing. This requirement keeps before the students the value of storing the Scriptures in their hearts and minds, and of being able to recall and use these with "success" in Christian work. (Joshua 1:8.)

#### **Class Preparation**

It is expected that students spend a minimum of 1½ hours in study for every hour of recitation in the study courses. Of music students one hour daily practice is required five days of the week for voice, piano, or instrumental lessons.

#### **Auditing**

The Institute will grant the privilege of auditing classes upon the payment of an auditing fee. Auditing students are expected to attend all sessions of the class, be in their assigned seats, and come under the same general regulations as regularly enrolled students.

#### **Private Tutorship**

In cases of conflicts in the class schedule, certain subjects may, by special permission of the Dean, be taken by private tutorship, providing there is no other way of meeting the specific requirement. Students meet personally and regularly with the instructor and the work covered is the equivalent of that done in class. The fee for private tutorship is \$6.00 per credit.

#### **Grading**

Credits are determined by recitations, theses, and examinations. The minimum passing grade on class work shall be 70%. Grading is carried out by the alphabetical scale as follows:

Grade	Grade Point	Description	Value
A	3	Excellent	94-100%
B	2	Good	87-93%
C	1	Average	78-86%
D	0	Poor	70-77%
F	-1	Failure	below 70%

The following marks are used in office record keeping though they do not appear on official transcripts:

E (conditional) becomes either D or F by the end of the following term.

Inc (incomplete) becomes F unless work is completed within one month after the end of a semester.

### **Student Load**

The recommended load for each course is indicated by the number of hours listed in the following course schedules and shall not exceed sixteen hours. However, students of any course who during the previous semester have maintained an average grade point of at least 1.8 may, if they so desire, elect additional subjects, or assume extra hours of employment. Maximum load allowable under the circumstance shall not exceed nineteen hours.

### **Class Attendance**

Students will be expected to attend all sessions of those classes in which enrolled. Absences will be excused by the Dean of Men or the Dean of Women only upon presentation of a valid and acceptable reason. Excessive absence or tardiness will result in grade point deduction.

### **Honors**

One extra grade point will be awarded students holding positions of honor in student organizations (president, two), and one each for Missions and Orientation classes, and for Practical Christian Work assignments.

Grade points will be forfeited for absence, tardiness, or misconduct.

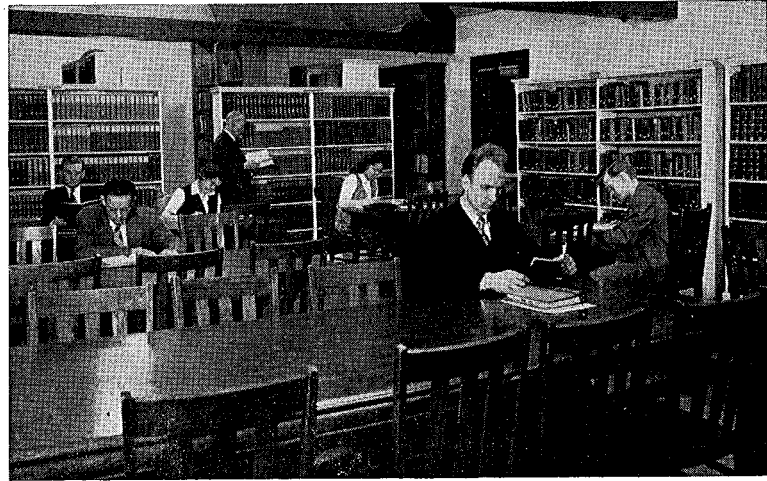
Graduation honors are awarded on the following basis: Very High Honor, to those averaging 2.2 grade points per semester hour or over; High Honor, to those averaging 2.5 or over, and with Highest Honor, to those averaging 2.8 or over.

### **Extracurricular Requirements**

Every student is required to attend the Missions Hour each Friday forenoon. All first year students are required to attend the Orientation I and II classes which meet once a week. These subjects are considered extra-curricular, and may not be included in totaling the credits earned toward graduation, but by each the student earns one grade point per semester.

### **Electives in Music**

A maximum of four hours of applied music will be accepted toward graduation in any of the non-music courses.



**The Library**

# THE THREE-YEAR COURSES

## Purpose and Aim

The Institute courses are designed to give the student a general, effective knowledge of God's Word and a personal acquaintance with the Lord Jesus Christ that will meet his personal needs, and equip him for general Christian work. Emphasis is placed upon the mastery of the English Bible, and effectiveness in soul winning.

A choice of four fields of concentration is offered:

1. **The General Bible Course.** This course is designed to provide a general working knowledge of the Bible, and its numerous electives afford the opportunity of pursuing subjects of special interest to the student.
2. **The Missionary Course.** The aim of this course is to prepare the student for service in the foreign mission fields. Besides the basic subjects of the General Course, missionary and medical subjects are added. The importance of the latter can hardly be overestimated. Every worker on the foreign field must know how to take care of his own health, and care intelligently for the health of his fellow-workers. Also he must be able to render assistance to the natives who suffer from diseases and mistreatment. Training along this line will give the missionary contacts to homes and hearts which otherwise would be closed to the message of the Gospel.
3. **The Christian Education Course.** While the first year is the same as the General Bible Course, the student during the last two years specializes in the field of Christian Education. This course has been designed particularly with those in mind who intend to make Sunday School teaching, Child Evangelism, or Home missions their chief work.
4. **The Bible Music Course.** Essentially this course consists of the main Bible subjects of the General Bible Course spread over a period of three years enabling the student to take a well-rounded music course in addition to his Bible study. The course is designed to fit the student for the ministry of music in the evangelistic field.

## Requirements

1. Completion of 92 hours of credit (Music 86) with an equivalent number of grade points.
2. A minimum of one year in residence at Grace Bible Institute.
3. Evidence of strong Christian character and soundness of doctrine.
4. Evidence of commendable zeal and faithfulness in practical Christian work.
5. Completion of the required subjects as outlined in the schedules following.

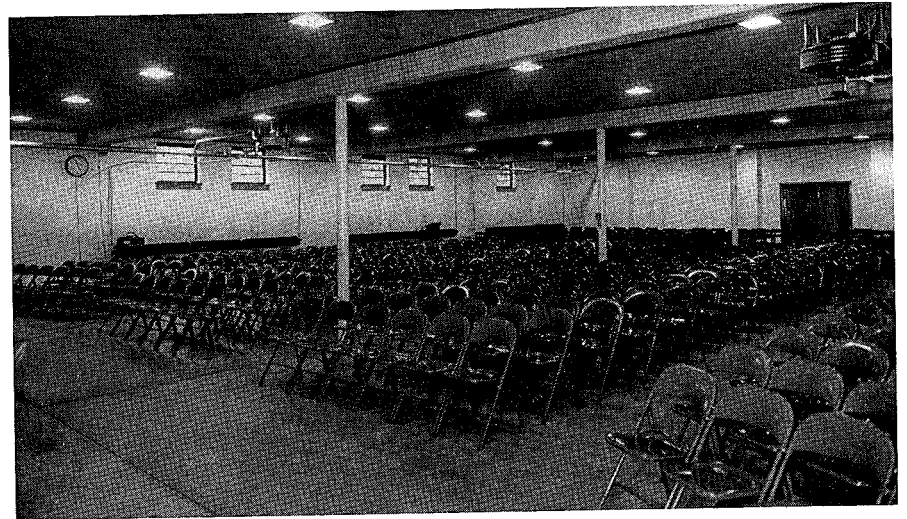
### Non-High School Graduates

Students who have not completed high school will be asked to take additional courses in English (English Grammar I, II; English Literature I, II) unless their English entrance examination score is high. This may necessitate the lengthening of a three year course to four. Upon graduation they will be granted the **certificate** of the Institute.

The recommended first year course of non-high school graduates is given below. In subsequent years they may follow the regular schedule of any of the three-year courses by completing College English I, II during Summer School, or by rearranging those courses to spread them out over a period of four years.

### First Year Course for Non-High School Graduates

First Semester		Second Semester	
Course Number	Hours Per Week	Course Number	Hours Per Week
111 O. T. Synthesis I .....	5	112 O. T. Synthesis II .....	5
113 Personal Evangelism I .....	2	114 Personal Evangelism II .....	2
801 English Grammar I .....	3	802 English Grammar II .....	3
803 English Literature I .....	2	804 English Literature II .....	2
311 Practical Christian Work .....	1	312 Prayer .....	1
411 Christian Education I or 911 Basic Music I .....	2	412 Christian Education II or 912 Basic Music II .....	2



The New Basement Auditorium

# GENERAL BIBLE COURSE

(92 hours credit required for diploma)

"Study to show thyself approved unto God, a workman that needeth not to be ashamed, rightly dividing the word of truth." (2 Timothy 2:15)

## First Year

First Semester		Second Semester	
Course Number	Hours Per Week	Course Number	Hours Per Week
111 O. T. Synthesis I .....	5	112 O. T. Synthesis II .....	5
113 Personal Evangelism I .....	2	114 Personal Evangelism II .....	2
311 Practical Christian Work .....	1	312 Prayer .....	1
411 Christian Education I .....	2	412 Christian Education II .....	2
811 College English I .....	3	812 College English II .....	3
911 Basic Music I .....	2	912 Basic Music II .....	2

## Second Year

First Semester		Second Semester	
Course Number	Hours Per Week	Course Number	Hours Per Week
121 N. T. Synthesis I .....	3	122 N. T. Synthesis II .....	3
123 Doctrine I .....	3	124 Doctrine II .....	3
323 Orientalism .....	1	324 Bible Geography .....	2
521 Church History Survey .....	2	622 History of Missions .....	2
823 Speech I .....	2	824 Speech II .....	2
321 Bible Introduction .....	2	322 Christian Evidence .....	1
Electives .....	3	326 Parliamentary Law .....	1
		Electives .....	2

## Third Year

First Semester		Second Semester	
Course Number	Hours Per Week	Course Number	Hours Per Week
131 Analysis of Romans .....	2	132 Analysis of Hebrews .....	2
135 Exposition I .....	2	136 Exposition II .....	2
137 Hermeneutics .....	3	138 Prophecy .....	3
231 General Psychology .....	3	232 Introduction to Philosophy .....	3
533 *Mennonite History .....	2	Electives .....	6
Electives .....	3		

\*Elective for students of other denominations.

Note: General Bible Course students desiring to elect Greek I and II during their third year may do so by special arrangement with the Dean.

# MISSIONARY COURSE

(92 hours credit required for diploma)

"Also I heard the voice of the Lord, saying, Whom shall I send, and who will go for us? Then said I, Here am I; send me." (Isaiah 6:8)

## First Year

First Semester		Second Semester	
Course Number	Hours Per Week	Course Number	Hours Per Week
111 O. T. Synthesis I .....	5	112 O. T. Synthesis II .....	5
113 Personal Evangelism I .....	2	114 Personal Evangelism II .....	2
311 Practical Christian Work .....	1	312 Prayer .....	1
411 Christian Education I .....	2	412 Christian Education II .....	2
811 College English I .....	3	812 College English II .....	3
911 Basic Music I .....	2	912 Basic Music II .....	2

## Second Year

First Semester		Second Semester	
Course Number	Hours Per Week	Course Number	Hours Per Week
121 N. T. Synthesis I .....	3	122 N. T. Synthesis II .....	3
123 Doctrine I .....	3	124 Doctrine II .....	3
521 Church History Survey .....	2	324 Bible Geography .....	2
823 Speech I .....	2	824 Speech II .....	2
533 *Mennonite History .....	2	622 History of Missions .....	2
623 Anatomy & Physiology .....	2	624 Missionary First Aid .....	2
Electives .....	2	326 Parliamentary Law .....	1
		Elective .....	1

## Third Year

First Semester		Second Semester	
Course Number	Hours Per Week	Course Number	Hours Per Week
131 Analysis of Romans .....	2	132 Analysis of Hebrews .....	2
135 Exposition I .....	2	136 Exposition II .....	2
137 Hermeneutics .....	3	138 Prophecy .....	3
621 Phonetics .....	1	234 Non-Christian Religions .....	2
631 Miss. Principles & Prac. ....	2	632 Anthropology .....	2
633 Fundamentals of Medicine I ..	2	634 Fundamentals of Medicine II ..	2
635 Missionary Photography .....	1	636 Missionary Mechanics .....	1
Electives .....	2	Electives .....	1

\*Elective for students of other denominations.

# CHRISTIAN EDUCATION COURSE

(92 hours credit required for diploma)

"Even so it is the will of your Father which is in heaven, that none of these little ones should perish." (Matthew 18:14)

## First Year

First Semester		Second Semester	
Course Number	Hours Per Week	Course Number	Hours Per Week
111 O. T. Synthesis I .....	5	112 O. T. Synthesis II .....	5
113 Personal Evangelism I .....	2	114 Personal Evangelism II .....	2
311 Practical Christian Work .....	1	312 Prayer .....	1
411 Christian Education I .....	2	412 Christian Education II .....	2
811 College English I .....	3	812 College English II .....	3
911 Basic Music I .....	2	912 Basic Music II .....	2

## Second Year

First Semester		Second Semester	
Course Number	Hours Per Week	Course Number	Hours Per Week
121 N. T. Synthesis I .....	3	122 N. T. Synthesis II .....	3
123 Doctrine I .....	3	124 Doctrine II .....	3
221 Child Psychology .....	2	424 Visual Aid .....	2
421 Chr. Ed. of Children I .....	2	422 Chr. Ed. of Children II .....	2
823 Speech I .....	2	824 Speech II .....	2
521 Church History Survey .....	2	622 History of Missions .....	2
Electives .....	2	Electives .....	2

## Third Year

First Semester		Second Semester	
Course Number	Hours Per Week	Course Number	Hours Per Week
131 Analysis of Romans .....	2	132 Analysis of Hebrews .....	2
135 Exposition I .....	2	136 Exposition II .....	2
137 Hermeneutics .....	3	138 Prophecy .....	3
533 *Mennonite History .....	2	432 History of Chr. Ed. .....	3
431 Chr. Ed. of Youth .....	3	Electives .....	5
Electives .....	3		

\*Elective for students of other denominations



# BIBLE - MUSIC COURSE

(86 hours credit required for diploma)

"I will sing with the spirit, and I will sing with the understanding also." (I Corinthians 14:15)

## First Year

First Semester		Second Semester	
Course Number	Hours Per Week	Course Number	Hours Per Week
111 O. T. Synthesis I	5	112 O. T. Synthesis II	5
113 Personal Evangelism I	2	114 Personal Evangelism II	2
311 Practical Christian Work	1	312 Prayer	1
811 College English I	3	812 College English II	3
911 Basic Music I	2	912 Basic Music II	2
900 Piano or Voice	1	900 Piano or Voice	1

## Second Year

First Semester		Second Semester	
Course Number	Hours Per Week	Course Number	Hours Per Week
121 N. T. Synthesis I	3	122 N. T. Synthesis II	3
123 Doctrine I	3	124 Doctrine II	3
131 Analysis of Romans	2	132 Analysis of Hebrews	2
923 Music Theory I	4	924 Music Theory II	4
921 Conducting I	2	922 Conducting II	2
900 Piano or Voice	1	900 Piano or Voice	1

## Third Year

First Semester		Second Semester	
Course Number	Hours Per Week	Course Number	Hours Per Week
135 Exposition I	2	136 Exposition II	2
137 Hermeneutics	3	138 Prophecy	3
533 *Mennonite History	2	622 History of Missions	2
931 Music Theory III	4	932 Music Theory IV	4
933 Music History I	2	934 Music History II	2
900 Piano or Voice	1	900 Piano or Voice	1

\*Elective for students of other denominations.

# THE COLLEGIATE COURSES

## Purpose and Aim

Students who desire more extended preparation for their life's work are encouraged to pursue the degree course. Formerly the Th. B. degree was granted to those students who completed a four year course of instruction in the fields of Bible and Theology. The granting of this degree, however, more properly belongs to the realm of the seminaries. The Accrediting Association of Bible Institutes and Bible Colleges therefore recommends that member schools pursuing a four year curriculum should preferably grant the A. B. degree. Since this meets with the approval of the United States Office of Education, Grace Bible Institute, beginning with the school year 1949-50, has complied and is now offering the A. B. in Bible degree.

In the light of this recommendation, Grace Bible Institute has strengthened its collegiate requirements so that its major and minors are built upon a general educational foundation equivalent to that required in other institutions of collegiate level in the state of Nebraska. The usual basic requirements of colleges and universities will thus be met, and to these are added the major and minor fields of concentration. Whereas liberal arts colleges grant majors in a variety of fields, Grace Bible Institute confines itself to granting a major in Bible only. No departure is thus contemplated from the established aim and policy of the school, namely, that of being a **Bible** institute, nor does the strengthening of the curriculum involve any competition with the aims and objectives of liberal arts colleges which train workers for other walks of life according to the majors offered. Grace Bible Institute reasserts its sole task to be that of thoroughly preparing men and women to become "fishers of men".

Local churches are calling for spiritual and well-prepared pastors, church workers, and Sunday School teachers; mission boards are asking for better trained candidates; in order to be able to gain entrance into some foreign countries as a missionary, an A. B. degree is essential. Grace Bible Institute is seeking to meet the demands, and it endeavors to integrate sound educational preparation with a thorough knowledge of God's Word, His will, and His plan, giving the Christian worker the best possible preparation for his life work.

## Choice of Minors

While only a Bible major is given, the Grace Bible Institute offers the student a choice of five minors. These are:

1. **Theology Minor—22 hours.** This course, by offering advanced subjects in Theology, Greek, and Homiletics, is designed especially for the prospective pastor.
2. **Philosophy and Psychology Minor—16 hours.** The purpose of this minor is to equip the student for pastoral counseling and to enable him to become a better personal soul winner.
3. **Christian Education Minor—22 hours.** Those intending to work with children or adults in Sunday School and vacation schools will find this an unusually helpful course.
4. **Mission Minor—18 hours.** Through the medical and missionary subjects offered, this course best serves the needs of the prospective missionary.
5. **Music Minor—24 hours.** Those who wish to enter the ministry of music, become church pianists, or broaden their knowledge of music will find helpful suggestions in this minor.

**General Requirements for the Bachelor of Arts in Bible Degree**

1. Completion of 126 hours of credit with 126 grade points.
2. A minimum of one year in residence at Grace Bible Institute.
3. Evidence of strong Christian character and soundness of doctrine.
4. Evidence of zeal and faithfulness in practical Christian work.
5. Demonstrate proficiency in the use of the English language.
6. Completion of the following specific educational requirements:

<b>Bible</b> .....	30 hours
O. T. Syn., 10 hours; N. T. Syn. 6 hours; Analysis, 4 hours; Exposition, 4 hours; Hermeneutics, 3 hours; Prophecy, 3 hours.	
<b>Theology</b> .....	10 hours
Doctrine, 6 hours; Sys. Theology, 4 hours.	
<b>English</b> .....	10 hours
College English, 6 hours; Speech, 4 hours.	
<b>Foreign Language</b> .....	16 hours
Greek, 16 hours, (or German, Spanish, French at University).	
<b>Natural Science</b> .....	6 hours
Either Physical Science, 6 hours or Biological Science, 6 hours.	
<b>Social Science</b> .....	10 hours
Sociology, 3 hours; World History, 3 hours; Church History, 4 hours.	
<b>Psychology and Philosophy</b> .....	6 hours
Gen. Psychology, 3 hours; Intro. to Philosophy, 3 hours.	
<b>General</b> .....	12 hours
Pract. Chr. Work, 1 hour; Prayer, 1 hour; P. E., 4 hours; Chr. Ed., 2 hours; Music, 4 hours.	
<b>Minor Field</b> (see page 35 and course schedules) .....	as required
<b>Electives</b> .....	as needed to total 126 hours

**Specific Requirements of Courses**

In the Theology Minor the foreign language requirement is three years of Greek.

Since 8 hours of applied music are required in the Music Minor, students of this minor may consider Sys. Theology I, II and Christian Education electives.

To meet the foreign language requirement of 16 hours, all students must complete two years of college work in a foreign language or its equivalent. While Greek is highly recommended, prospective missionaries may wish to begin the study of another foreign language, such as Spanish, French, or German. An acceptable equivalent may consist of:

1. One year of high school and three semesters of college work in the same language.
2. Two years of high school and two semesters of college work in the same language.
3. Three years of high school and one additional semester of college work in the same language.

In any case, only work done on the college level will be accepted for credit towards the degree.

# COLLEGIATE COURSE

(Bible Major, Theology Minor)

(126 hours credit required for A. B. in Bible degree)

"But we will give ourselves continually to prayer, and to the ministry of the Word . . . and the Word of God increased." (Acts 6:4,7)

## First Year

First Semester		Second Semester	
Course Number	Hours Per Week	Course Number	Hours Per Week
111 O. T. Synthesis I	5	112 O. T. Synthesis II	5
113 Personal Evangelism I	2	114 Personal Evangelism II	2
311 Practical Christian Work	1	312 Prayer	1
811 College English I	3	812 College English II	3
823 Speech I	2	824 Speech II	2
911 Basic Music I	2	912 Basic Music II	2

## Second Year

First Semester		Second Semester	
Course Number	Hours Per Week	Course Number	Hours Per Week
121 N. T. Synthesis I	3	122 N. T. Synthesis II	3
123 Doctrine I	3	124 Doctrine II	3
131 Analysis of Romans	2	132 Analysis of Hebrews	2
523 Church History I	2	524 Church History II	2
821 Greek I	5	822 Greek II	5
Electives	2	412 Christian Education II	2

## Third Year

First Semester		Second Semester	
Course Number	Hours Per Week	Course Number	Hours Per Week
133 Systematic Theology I	2	134 Systematic Theology II	2
135 Exposition I	2	136 Exposition II	2
231 General Psychology	3	232 Introduction to Philosophy	3
531 World History	3	532 Sociology	3
831 Greek Exegesis I	3	832 Greek Exegesis II	3
833 Homiletics I	2	834 Homiletics II	2
Elective	1	Elective	1

## Fourth Year

First Semester		Second Semester	
Course Number	Hours Per Week	Course Number	Hours Per Week
137 Hermeneutics	3	138 Prophecy	3
141 Exposition III	2	142 Exposition IV	2
143 Systematic Theology III	2	144 Systematic Theology IV	2
145 Sys. Theology Seminar I	1	146 Sys. Theology Seminar II	1
541 History of the Hebrews	2	342 Archeology	2
741 or 743 Science I	3	742 or 744 Science II	3
841 Greek Exegesis III	2	842 Greek Exegesis IV	2

# COLLEGIATE COURSE

(Bible Major, Philosophy and Psychology Minor)

(126 hours credit required for A. B. in Bible degree)

"The Lord giveth wisdom: out of his mouth cometh knowledge and understanding."  
(Proverbs 2:6)

## First Year

First Semester		Second Semester	
Course Number	Hours Per Week	Course Number	Hours Per Week
111 O. T. Synthesis I .....	5	112 O. T. Synthesis I .....	5
113 Personal Evangelism I .....	2	114 Personal Evangelism II .....	2
311 Practical Christian Work .....	1	312 Prayer .....	1
811 College English I .....	3	812 College English II .....	3
823 Speech I .....	2	824 Speech II .....	2
911 Basic Music I .....	2	912 Basic Music II .....	2

## Second Year

First Semester		Second Semester	
Course Number	Hours Per Week	Course Number	Hours Per Week
121 N. T. Synthesis I .....	3	122 N. T. Synthesis II .....	3
123 Doctrine I .....	3	124 Doctrine II .....	3
221 Child Psychology .....	2	222 Logic .....	2
523 Church History I .....	2	524 Church History II .....	2
821 Greek I .....	5	822 Greek II .....	5
Electives .....	2	412 Christian Education II .....	2

## Third Year

First Semester		Second Semester	
Course Number	Hours Per Week	Course Number	Hours Per Week
131 Analysis of Romans .....	2	132 Analysis of Hebrews .....	2
133 Systematic Theology I .....	2	134 Systematic Theology II .....	2
135 Exposition I .....	2	136 Exposition II .....	2
231 General Psychology .....	3	232 Intro. to Philosophy .....	3
531 World History .....	3	532 Sociology .....	3
831 Greek Exegesis I .....	3	832 Greek Exegesis II .....	3
Electives .....	1	Electives .....	1

## Fourth Year

First Semester		Second Semester	
Course Number	Hours Per Week	Course Number	Hours Per Week
143 Systematic Theology III .....	2	144 Systematic Theology IV .....	2
137 Hermeneutics .....	3	138 Prophecy .....	3
141 Exposition III .....	2	142 Exposition IV .....	2
241 Ethics .....	2	242 Psy. of Christianity .....	2
741 or 743 Science I .....	3	742 or 744 Science II .....	3
Electives .....	3	Electives .....	3

# COLLEGIATE COURSE

(Bible Major, Christian Education Minor)

(126 hours credits required for A. B. in Bible degree or B. R. E. degree)

"These were noble. . . in that they. . . searched the scriptures daily. Therefore many of them believed; also of honorable women. . . not a few." (Acts 17:11,12)

## First Year

First Semester		Second Semester	
Course Number	Hours Per Week	Course Number	Hours Per Week
111 O. T. Synthesis I	5	112 O. T. Synthesis II	5
113 Personal Evangelism I	2	114 Personal Evangelism II	2
311 Practical Christian Work	1	312 Prayer	1
811 College English I	3	812 College English II	3
823 Speech I	2	824 Speech II	2
411 Christian Education I	2	412 Christian Education II	2

## Second Year

First Semester		Second Semester	
Course Number	Hours Per Week	Course Number	Hours Per Week
121 N. T. Synthesis I	3	122 N. T. Synthesis II	3
123 Doctrine I	3	124 Doctrine I	3
221 Child Psychology	2	424 Visual Aid	2
523 Church History I	2	524 Church History II	2
821 Greek I	5	822 Greek II	5
911 Basic Music I	2	912 Basic Music II	2

## Third Year

First Semester		Second Semester	
Course Number	Hours Per Week	Course Number	Hours Per Week
131 Analysis of Romans	2	132 Analysis of Hebrews	2
133 Systematic Theology I	2	134 Systematic Theology II	2
231 General Psychology	3	232 Intro. to Philosophy	3
421 Chr. Ed. of Children I	2	422 Chr. Ed. of Children II	2
531 World History	3	532 Sociology	3
831 Greek Exegesis I	3	832 Greek Exegesis II	3
Elective	1	Elective	1

## Fourth Year

First Semester		Second Semester	
Course Number	Hours Per Week	Course Number	Hours Per Week
135 Exposition I	2	136 Exposition II	2
137 Hermeneutics	3	138 Prophecy	3
431 Chr. Ed. of Youth	3	432 History of Chr. Ed.	3
441 Christian Ed. of Adults	2	442 Ed. Work of the Church	2
443 Chr. Ed. Seminar I	1	444 Chr. Ed. Seminar II	1
741 or 743 Science I	3	742 or 744 Science II	3
Electives	1	Electives	1

# COLLEGIATE COURSE

(Bible Major, Missions Minor)

(126 hours credit required for A. B. in Bible degree)

"Go ye into all the world, and preach the gospel to every creature." (Mark 16:15)

## First Year

First Semester		Second Semester	
Course Number	Hours Per Week	Course Number	Hours Per Week
111 O. T. Synthesis I	5	112 O. T. Synthesis II	5
113 Personal Evangelism I	2	114 Personal Evangelism II	2
311 Practical Christian Work	1	312 Prayer	1
811 College English I	3	812 College English II	3
823 Speech I	2	824 Speech II	2
911 Basic Music I	2	912 Basic Music II	2

## Second Year

First Semester		Second Semester	
Course Number	Hours Per Week	Course Number	Hours Per Week
121 N. T. Synthesis I	3	122 N. T. Synthesis II	3
123 Doctrine I	3	124 Doctrine II	3
523 Church History I	2	524 Church History II	2
623 Anatomy and Physiology	2	624 Missionary First Aid	2
821 Greek I	5	822 Greek II	5
Electives	2	622 History of Missions	2

## Third Year

First Semester		Second Semester	
Course Number	Hours Per Week	Course Number	Hours Per Week
131 Analysis of Romans	2	132 Analysis of Hebrews	2
231 General Psychology	3	232 Intro. to Philosophy	3
531 World History	3	532 Sociology	3
633 Fund. of Medicine I	2	634 Fund. of Medicine II	2
831 Greek Exegesis I	3	832 Greek Exegesis II	3
Electives	3	635 or 636 Photo. or Mechanics	1
		412 Christian Education II	2

## Fourth Year

First Semester		Second Semester	
Course Number	Hours Per Week	Course Number	Hours Per Week
133 Systematic Theology I	2	134 Systematic Theology II	2
135 Exposition I	2	136 Exposition II	2
137 Hermeneutics	3	138 Prophecy	3
621 Phonetics	1	234 Non-Christian Religions	2
631 Missionary Princ. & Prac.	2	632 Anthropology	2
741 or 743 Science I	3	742 or 744 Science II	3
Electives	2	Elective	1

# COLLEGIATE COURSE

(Bible Major, Music Minor)

(126 hours credit required for A. B. in Bible degree)

"Let the word of Christ dwell in you richly in all wisdom; teaching and admonishing one another in psalms and hymns and spiritual songs, singing with grace in your hearts to the Lord." (Col. 3:16)

## First Year

First Semester		Second Semester	
Course Number	Hours Per Week	Course Number	Hours Per Week
111 O. T. Synthesis I	5	112 O. T. Synthesis II	5
113 Personal Evangelism I	2	114 Personal Evangelism II	2
311 Practical Christian Work	1	312 Prayer	1
811 College English I	3	812 College English II	3
823 Speech I	2	824 Speech I	2
911 Basic Music I	2	912 Basic Music II	2
900 Piano or Voice	1	900 Piano or Voice	1

## Second Year

First Semester		Second Semester	
Course Number	Hours Per Week	Course Number	Hours Per Week
121 N. T. Synthesis I	3	122 N. T. Synthesis II	3
123 Doctrine I	3	124 Doctrine II	3
523 Church History I	2	524 Church History II	2
821 Greek I	5	822 Greek II	5
925 Conducting I	2	926 Conducting II	2
900 Piano or Voice	1	900 Piano or Voice	1

## Third Year

First Semester		Second Semester	
Course Number	Hours Per Week	Course Number	Hours Per Week
131 Analysis of Romans	2	134 Analysis of Hebrews	2
231 General Psychology	3	232 Intro. to Philosophy	3
531 World History	3	532 Sociology	3
831 Greek Exegesis I	3	832 Greek Exegesis II	3
923 Music Theory I	4	924 Music Theory II	4
900 Piano or Voice	1	900 Piano or Voice	1

## Fourth Year

First Semester		Second Semester	
Course Number	Hours Per Week	Course Number	Hours Per Week
135 Exposition I	2	136 Exposition II	2
137 Hermeneutics	3	138 Prophecy	3
741 or 743 Science I	3	742 or 744 Science II	3
931 Music Theory III	4	932 Music Theory IV	4
933 Music History I	2	934 Music History II	2
900 Piano or Voice	1	900 Piano or Voice	1



# DESCRIPTION OF COURSES

## BIBLE AND THEOLOGY - 100

### ENGLISH BIBLE

#### 111-112 Old Testament Synthesis I, II.

A synthetic study of the Old Testament helps the student to obtain a broad view of the contents of each book. It involves the reading of each book, its study with the aid of a helpful outline, and special attention at important or difficult points. 5 hours.

#### 113-114 Personal Evangelism I, II.

Methods of doing personal work, of dealing with excuses and difficulties and of strengthening new converts in the faith. Emphasis is placed on Scripture memory work and putting theory into practice. A practical knowledge of the Word is the goal of this course. 2 hours.

#### 121-122 New Testament Synthesis I, II.

A synthetic study of the New Testament similar to that of the Old Testament. It is a book by book study consisting of the perusal, examination, and correlation of the 27 books. Somewhat more thorough work is done as there is less reading material to be covered. 3 hours.

#### 131 Analysis of Romans

An analytical, verse by verse, study of the book of Romans by the student under the guidance of the instructor. In Romans the plan of salvation by grace through faith is clearly set forth in its justifying influence upon the believer—often a marvelous discovery to young Christians. 2 hours.

#### 132 Analysis of Hebrews

A continuance of the analytical method of study applied to the book of Hebrews. The superiority of the new covenant over the old, of the new Mediator instead of the old, is presented in such a way as to lead the student into a deeper and closer fellowship with his Lord. 2 hours.

#### 135-136 Exposition I, II.

These courses are an expository study of selected books of the Bible, and acquaint the student with the expository method of Bible study and Bible teaching. The course calls for individual research, making of original expository outlines, and delivery of the same in class. 2 hours.

#### 137 Hermeneutics.

The fundamental principles of interpretation are studied as a basis for a correct understanding, proper handling, and sane exegesis of the Holy Scriptures. It is essential that students distinguish between the things that differ in God's Word. 3 hours.

**138 Prophecy**

A comprehensive study of the prophecies concerning the first and second advents of Christ, the Jews, the land of Palestine, the end-time, and other important prophetic truths and their relation to the Christian's present day life. Larkin's "Dispensational Truth" will be used as the text. 3 hours

**141-142 Exposition III, IV.**

These are advanced subjects for the collegiate course requiring a knowledge of the Greek. Select books are studied from the expository standpoint and students are taught how to give expositions from assigned portions. 2 hours

**THEOLOGY**

**123-124 Doctrine I, II.**

The great doctrines of the Christian faith are studied in the light of the testimony of the Scriptures. The doctrines of God, Christ, the Holy Spirit, Man, Sin, Salvation, etc., are studied. This equips the student with a general grasp of the teachings of the Bible upon all major themes. 3 hours

**133-134 Systematic Theology I, II.**

Students of the degree courses are in a position to undertake advanced doctrinal studies. Theology, Christology, and Pneumatology are covered during the third year. 2 hours

**143-144 Systematic Theology III, IV.**

In his last year the student will cover Anthropology, Hamartialogy, Soteriology, Ecclesiology, Angelology, and Bibliology. This systematic and thorough course will clarify the student's own thinking and equip him for a wide field of useful service, enabling him to distinguish the Scriptural from the unscriptural with keen discernment. 2 hours

**145-146 Systematic Theology Seminar I, II.**

A comprehensive survey of the field of theology for the purpose of integrating its varied aspects into an organic whole. Directed individual research. Theses. 1 hour

**147 History of Doctrine**

A historical study of the doctrines held by the church at various periods in its history, of the great controversies that have been waged from time to time, and of the heroes of the Faith who uncompromisingly have stood true to God and His Word, is invaluable to a Christian worker inasmuch as all present day sects and perversions of the Gospel may be recognized in the heresies of the Church of other centuries. The course is elective. 2 hours

**PSYCHOLOGY AND PHILOSOPHY - 200**

**221 Child Psychology**

This course deals with the development of children from infancy to adolescence and succeeds the elementary course in child study. This is a very important study, because during the plastic period of childhood the foundation is laid for the adult life of the person. In order to work effectively with children we must understand their problems and needs. 2 hours

**222 Logic.**

This is a study of the principles of reasoning, both deductive and inductive, with special emphasis on the practical applications of the science. 2 hours

**231 General Psychology.**

This is the study of the principles underlying human behavior, designed to help the student to get a better knowledge of himself and of other people. Such knowledge is necessary in order to live our lives effectively for God and for others. 3 hours

**232 Introduction to Philosophy.**

A study of the Christian faith in its bearing upon the fundamental problems of life. It is designed especially to establish the student more firmly in his faith by showing him that the Christian faith has the only real and adequate answer to these problems. 3 hours

**234 Non-Christian Religions.**

Background description of pagan religions met on various mission fields will be given. The prevalence of unscriptural religious sects in our country today, many of which may be traced to oriental influences, makes a study of this subject highly desirable for any Christian worker. 2 hours

**241 Ethics.**

A study of the fundamental principles underlying character and moral conduct, with particular reference to the Christian faith as furnishing the only real and adequate basis for righteous living. 2 hours

**242 Psychology of Christianity.**

In this study the facts and principles of psychology are applied especially to Christian living. Emphasis is put upon the methods which are used in winning others and in influencing them toward a fuller and more fruitful Christian life. 2 hours

**GENERAL - 300**

**301-302 Orientation.**

A course intended to help students adapt themselves to the new environment of the Bible Institute. The course also covers methods of effective study, etiquette, Christian ethics, discipline, Institute policies, and the choice of courses. The purpose is to increase student efficiency. No credit.

**311 Practical Christian Work.**

Practical work in the last analysis is God's work for Christ through His own. Whole-hearted yieldedness to God at all times is required above all in serving the Lord. This course offers instruction in leadership and group organization, tract distribution, visitation of hospitals and old people's homes, child evangelism, open air meetings, house to house visitation, rescue mission work and jail assignments. 1 hour.

**312 Prayer.**

As learning the secret of prayer is essential to a successful Christian life, a course in prayer during the first year is helpful. The manner, value, and results of prayer are emphasized. In addition to the usual participation in the prayer life of the school, a special text is studied, biographies of men and women of prayer are read, and special lectures on prayer are given. 1 hour

**321 Bible Introduction.**

A course in which the natural history of the Bible is traced from the ancient, original manuscripts to the present day translations. A study of Biblical writing methods and materials, inspiration, canonicity, genuineness, authenticity, Pseudepigrapha, Apocrypha, and an evaluation of modern versions. A study of the methods of Bible criticism is included in the final weeks of the course. 2 hours

**322 Christian Evidences.**

A sane and sound investigation of the "things which are most surely believed among us", concerning "the faith which was once delivered unto the saints." Evidences are presented in support of the various phases of Christian faith as related to the living and written Words—Christ and the Scriptures. 1 hour

**323 Orientalism.**

A knowledge of the manners and customs of Biblical times will throw light upon obscure passages of Scriptures as well as inform a prospective missionary what to expect in heathen countries. 1 hour

**324 Bible Geography.**

A knowledge of the geography of the Bible is essential to its correct understanding. Maps are produced by the student, and the life and journeys of Bible characters are traced on these. 2 hours

**326 Parliamentary Law.**

This course is designed to give the student a knowledge of how to conduct business sessions in the school, in church, or in a conference 1 hour

**331-332 Typing I, II**

Control of the keyboard is mastered. Both accuracy and speed of typing are emphasized through speed tests and practical problems as typing sentences, paragraphs, and letters. In the second semester, speed is increased and more difficult projects are typed. 2 hours

**333-334 Bookkeeping I, II**

A study of the elementary fundamentals of bookkeeping. It is most essential that Christian workers be honest and accurate in their financial dealings with others, and to that end careful record keeping is important. 2 hours

**341 Church Administration**

This study brings to the student's attention the practical problems of a pastor's call, his service and duties, and his relation to the church and the community. The subject is of unusual value to those entering the ministry. The course is elective. 2 hours

**342 Archeology.**

Advanced students will find much additional evidence in a survey of the field of archeology. A study of recent discoveries in Palestine, Babylonia, Egypt and Assyria is included in the course. 2 hours

## CHRISTIAN EDUCATION - 400

### 411 Christian Education I

(a) A survey of the physical, social, mental and spiritual growth of the child as he develops through the age levels of infancy, childhood and adolescence. (b) A study of the administration, organization, aims, standards, grading, finance, equipment, records, curriculum, extension, and teacher training in the Sunday School. 2 hours

### 412 Christian Education II

(a) A study of recognized principles and methods of Christian instruction. (b) A study of aims, methods, organization, administration, program, building, advertising, and materials to be used in Vacation Bible Schools. 2 hours

### 421-422 Christian Education of Children I, II.

A study of the total church program for children; characteristics, problems, and needs of the child; materials and methods for children's work including Bible study, worship, evangelism, missionary education, stewardship, story-telling, visual aids, and practice teaching; administration of the church's program in the nursery, kindergarten, primary and junior departments. 2 hours

### 424 Visual Aid.

The use and evaluation of visual aids; maps, charts, felto-graphs, pictures, films, film strips, slides, etc. 2 hours.

### 431 Christian Education of Youth.

A study of the nature, interests, needs, objectives, methods, organization, leadership, and materials for adequate Christian training in the intermediate, senior and young people's departments; including worship programs and practice teaching. 3 hours

### 432 History of Christian Education.

A study of theory and practice of educational systems from earliest civilization to the present time. An evaluation of current trends in religious education. Principles that underlie an adequate system of Christian nurture. 3 hours

### 441 Christian Education of Adults.

A study of Mark by the inductive method. Basic needs, interests and problems of adult life; materials, methods, and practice teaching; organization, administration, and supervision of adult education. 2 hours

### 442 Educational Work of the Church.

A study of the teaching ministry of the church with special emphasis on the total church organization: the Sunday School, Week-day Church School, Vacation Church School and leadership training. Special study of aims, standards, grading, finance and equipment, records, cooperation of home and church. 2 hours

### 443-444 Christian Education Seminar I, II.

A comprehensive survey of the field of Christian Education, for the purpose of integrating the various phases. A study of major problems met in the field. The students must discover, analyze, define the problem, plan its solution and evaluate the results. Individual research and group conferences. 1 hour

## SOCIAL SCIENCE - 500

### 531 World History

A survey of ancient and modern history emphasizing social, cultural, political and economic developments down through the centuries. This basic course is designed to help the student orient himself more intelligently for later courses dealing with Biblical history, church history and the recent developments of the missionary movement. 3 hours

### 532 Sociology

A basic course dealing with the theories and explanation of factors influencing group life. Study of social relations, social forces, and social institutions. The endeavor is made to help the student develop a consistent ethical and Christian outlook upon society. 3 hours

### 521 Church History Survey

The history of the Christian church from Pentecost through the Reformation to the present time is studied in the light of a standard textbook, collateral reading, and lectures. 2 hours

### 523-524 Church History I, II.

An extensive and thorough course tracing the history of the church down to recent times, and designed especially for the students of the degree course. Ancient, Medieval, and Modern church history is covered and special attention given to the great historical movements that affected the Church. 2 hours

### 533 Mennonite History.

Using an approved textbook together with collateral research, a detailed study of Mennonite history is made. The doctrines of the various branches of the Mennonite faith are carefully compared with the teachings of Scriptures. This course is elective to students who are of other denominations. 2 hours

### 541 History of the Hebrews.

A historical study of the Jewish people serving as an advanced course to the knowledge gained in Old Testament Synthesis and as a preparatory course for Archeology. Current information on Jewish problems and life are constantly woven in. 2 hours

## MISSIONS - 600

### 601-608 Missions.

Lectures by missionaries on furlough whenever available. Discussions of the practical problems of mission work. No credit

### 621 Phonetics.

The aim of this course is to aid the prospective missionary in the acquiring of foreign languages and to present methods of translating foreign languages and principles of reducing new tongues to writing. 1 hour

### 622 History of Missions.

The history and progress of world wide missions from Apostolic days to the present are carefully studied, the needs of the various mission fields presented and the duties of the believer pointed out. During the latter part of the semester a study will be made of modern missions and mission societies. The survey will include Mennonite missions. 2 hours

**623 Anatomy and Physiology.**

A foundation course for the other medical subjects. Ignorance of the elementary physiological facts, such as presented in this brief but comprehensive course, may greatly impair the missionary's usefulness or even imperil his life. 2 hours

**624 Missionary First Aid.**

A course designed to acquaint prospective missionaries with rudimentary principles of medical care. Special emphasis is placed on tropical diseases. 2 hours

**631 Missionary Principles and Practice**

A course of instruction designed to prepare the prospective missionary for meeting the peculiar conditions and problems of life and service awaiting him in a strange land or community. Discussion and evaluation of the problems of the missionary. 2 hours

**632 Anthropology**

A study of man and his culture from the standpoint of the missionary. Survey of the languages, religions, belief, and social organizations of primitive people. 2 hours

**633-634 Fundamentals of Medicine I, II.**

A lecture, study, and laboratory course covering such branches of medicine as diagnosis, dentistry, minor surgery, eye diseases, obstetrics, tropical diseases and communicable diseases presented by a competent, Christian physician. 2 hours

**635 Missionary Photography.**

As one picture can tell more than a thousand words, all missionaries, should know something about photography. The course includes a working knowledge of various types of cameras, still and motion projection, and such laboratory techniques as developing, printing and enlarging. For credit each student must produce a series of acceptable prints. A laboratory fee of \$2.00 per student is charged. Limited to third year students. 1 hour

**636 Missionary Mechanics.**

Ability to make minor repairs on mechanical devices and vehicles is a great asset to any missionary. The course includes a mastery of simple mechanical principles, visits to mechanical shops, and individual experience in the repair and assembly of common mechanical objects. Limited to third year students. 1 hour

**637 Missionary Biography.**

A study of the lives of early missionaries from William Carey to those of the present age. This is largely a reading and research course. This course is elective. 1 hour

**NATURAL SCIENCE - 700**

**741-742 Physical Science, I, II.**

A survey of the physical sciences: astronomy, chemistry, geology, and physics, with special emphasis upon the latter. 3 hours

**743-744 Biological Science, I, II.**

A survey of the natural life processes of plants and animals. 3 hours

## LANGUAGES - 800

### 801-802 High School English Grammar I, II

Students who have not completed high school or who fall low in their entrance examinations will be asked to take this course in English Grammar which is on the high school level. Emphasis is on parts of speech and sentence structure. No collegiate credit

### 803-804 High School English Literature I, II

During the first semester the study centers upon a reading acquaintance of the best in English literature, including poetry, short story and prose. The second semester consists of a study of Christian literature. The course is designed especially for non-high school graduates. No collegiate credit

### 811-812 College English I, II

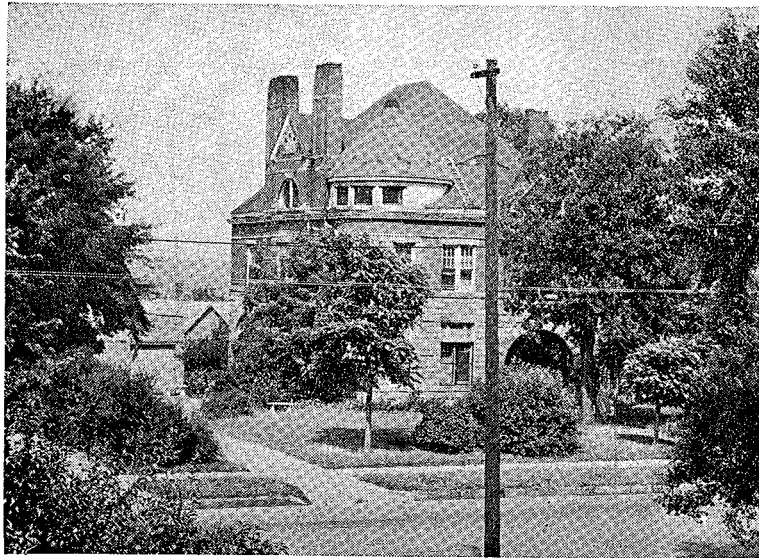
Thorough review of grammar. A study of the varieties of sentence structure, punctuation, paragraph construction, written description and expository composition. Second semester, advanced composition. This is a college level course. 3 hours

### 821-822 Greek I, II.

A study devoted to the mastery of the rudiments of the language and the acquisition of the vocabulary; during the latter part of the second semester the first five chapters of John are studied. Prerequisite: College English II, or equivalent. 5 hours

### 823-824 Speech I, II.

The fundamentals of oral expression as applied to public reading of the scriptures, teaching, and the delivery of themes, devotionals, and gospel messages. The course emphasizes personal appearance, proper posture, correct breathing, articulation, and phrasing; aims to give the student an elementary knowledge of homiletics, and supplies practical experience through brief extempore speeches. 2 hours



**Bartell Hall, Faculty and Student Apartments**



**831-832 Greek Exegesis I, II.**

The study of Greek grammar and syntax is continued. Exegesis of various Epistles with special attention to the exegetical method. 3 hours

**841-842 Greek Exegesis III, IV.**

An advanced course in Greek exegesis for students of the theological course. 2 hours

**843-844 Homiletics I, II.**

Courses in the preparation and delivery of Gospel messages, themes and sermons, and as such adapted especially to men students. Emphasis is laid on the exposition of the Word. Practice preaching constitutes a major part of the course. 2 hours

Note: Two years of any of the following languages may be taken at the University of Omaha, School of Adult Education, Evening School, and will be accepted to meet the foreign language requirement: German, Spanish, French.

**MUSIC - 900**

**911-912 Basic Music I, II**

A musical survey including fundamentals of notation, elementary conducting, and practical hymnology. 2 hours

**921 Conducting I**

An elementary course in conducting designed for Christian workers. Practice in the conducting of smaller forms of church music, with emphasis on directing congregational singing. 1 hour

**922 Conducting II.**

A continuation of course number 921. Principles of choral technique and interpretation. 2 hours

**923-924 Music Theory I, II.**

An integrated course offering advanced sight singing and ear training, and introducing the study of diatonic harmony with simple modulations. Analysis, composition and arranging are included.

**931 932 Music Theory III, IV.**

Chromatic chords used as embellishments and as a means of effecting modulations. Analysis, composition and arranging are included. 4 hours

**933-934 Music History I, II**

A study of the master composers of the Classical, Romantic, and Modern schools, together with appreciation of all trends and forms. Special emphasis is placed upon sacred music. 2 hours

**900 Applied Music.**

(Note: A nominal charge of \$1.00 per lesson will be made to students of the Bible-Music course and Music minors of the degree course for supervised private instruction in Piano or Voice. Non-music students will pay \$1.50. A minimum of 14 lessons is required per semester for credit.) All applied music students are required to attend the repertoire class once a month. When changing from a music to a non-music course, a student of applied music must pay the difference on the cost of lessons in order to maintain credit in the work done.

### **Private Piano**

Instruction in piano consisting of a one-half hour lesson per week and a minimum of one hour daily practice. Emphasis is placed on playing hymns and Gospel songs well. The finest technical studies and compositions of the masters are taught in the course. 1 hour

### **Voice.**

Emphasis is placed on producing the desired qualities of expression and intensity through proper control of the breath and the proper training of the vocal organs. Personality and poise are stressed. A year of piano is recommended for those students who have had no previous piano instruction. 1 hour

### **Instrumental**

Instruction in the playing of brass and stringed instruments may be arranged at the student's request. 1 hour

### **Grace Chorale**

A 50-voice mixed choir is selected by audition at the beginning of the first semester to be trained in the interpretation of all worthy forms of sacred music. Several public appearances are made during the year, including an annual spring concert tour. One hour credit per semester. No credit granted for single semester only.

### **Quartets, Trios**

The music faculty is prepared to assist in the training of those students who wish to organize themselves into quartets, trios, or other musical groups. No credit.



**The Grace Chorale**

# STUDENT ACTIVITIES

## **Devotional Life.**

The Institute considers the devotional life of the student a very important item of his training. An early morning quiet hour is daily set aside for the student's own personal devotional life. Further, each class day there is set aside a twenty minute devotional and testimonial period in which both students and faculty take part. A portion of this time is also used daily to praise the Lord in song. Students themselves sponsor additional prayer meetings in which smaller groups remember special needs. All students are encouraged to schedule special prayer periods.

## **Student Body Association.**

The Student Body Association (S. B. A.) is an organization comprising the entire student body and exists for the purpose of fostering a spirit of fellowship, of promoting the welfare of the students, and of directing student affairs. Every other Thursday morning the Student Body Council is in charge of the chapel period. The Student Body Council is in charge of arranging all the student activities of the school.

## **Macedonian Missionary Fellowship.**

In order that the missionary spirit of the school may be kept stimulated and fresh, a missionary society called the "Macedonian Missionary Fellowship" (M.M.F.) was organized by the Student Body Association. This organization has charge of alternate Thursday chapel periods. The students also gather every Friday during this devotional period for a season of prayer in which the needs of the various mission fields and missionaries individually are remembered. A mission offering is taken every other Thursday. The students have divided themselves into twelve groups known as prayer bands, each praying for some specific field such as China, Africa, India, South America, or home needs. This period of prayer on Friday is followed by the Missions Hour in which, whenever possible, a missionary in a soul-stirring way presents the needs of his field.

## **"Student Streamers".**

The Student Body Association sponsors a weekly mimeographed publication known as the "Student Streamers." It serves as a record of school activities, brings items of interest to the students, and offers a channel through which students may develop their writing talents. An editorial staff is elected by the Student Body Association. Valuable training in journalism is thus afforded under the supervision of the English department of the school.

## **"Free Nights".**

Friday evenings have been set aside as free nights, when students gather for an evening of relaxation and fellowship in a home-like atmosphere. A special committee, appointed by the Student Body Council, plans the programs for these evenings. The singspirations, the testimonial periods, the recreational games, as well as occasional refreshments long remain in the memory of the student as a blessed time of fellowship with others who love the Lord.

### **Semi-annual Picnics.**

As the Institute believes in a well-balanced life in which recreation has a part, the Student Body Association each fall and spring sponsors a school picnic. One of the many large parks of Omaha is chosen for the site and a day is spent in God's great open out-of-doors. An appetizing meal climaxes the strenuous activities of the outing, and students and faculty alike return to their work refreshed in mind and body. While the Institute is in sympathy with good physical recreation, it is not in favor of competitive athletics with other schools.

### **Gospel Teams.**

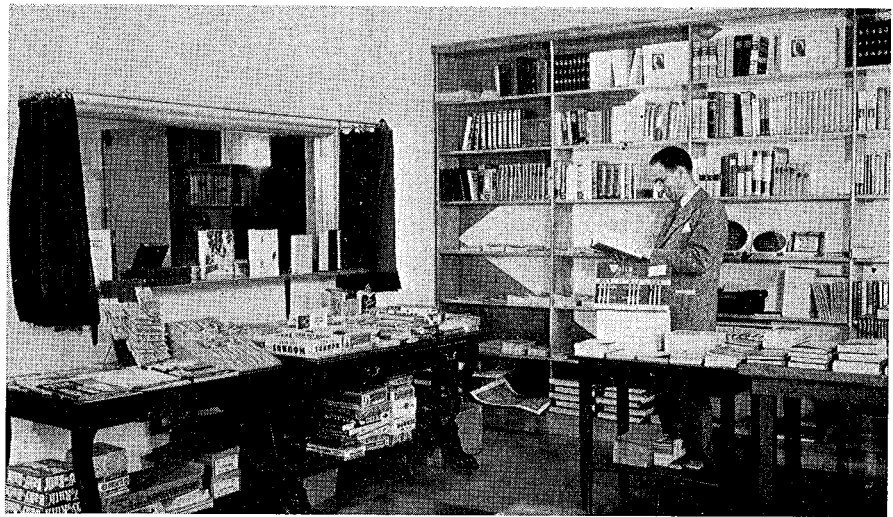
Quartets, trios and other groups have the opportunity to organize Gospel Teams, and as a group to witness for Christ. Opportunities to testify in Omaha and vicinity, as well as on week-end or extended vacation tours are arranged through the practical work department and the extension department of the school. Among the numerous teams may be mentioned the jail teams, hospital teams, street meeting groups, city-mission workers, and other smaller groups engaged in child evangelism, house visitation, etc.

### **Prayer Room.**

As in most cases two students occupy one room, a special room has been equipped and furnished by the senior class of 1946 and is set aside as a prayer room. Here students may alone unburden their hearts to God, commune with Him, and seek His guidance. Christ often sought to be alone with God; we too may hear His voice and learn His will as we pause in His presence.

### **Faculty Cooperation.**

Faculty sponsors are annually appointed to act as advisers to the Student Body Association, the Macedonian Missionary Fellowship, the senior class, the junior class, the "Student Streamers," the "Charis" staff, the Singspiration committee, and the social committee. This cooperation of the faculty with the students in their activities is mutually beneficial and ties the two together in a bond of Christian fellowship.



**The Grace Book Store, Ed. B. Reimer, Manager.**

# STUDENT REGISTER

Graduates  
1949-1950

28	Bartel, Adeline	Wales, North Dakota
28	Bergen, Alvin	Goltry, Oklahoma
28	Bonebrake, Boyd	Diagonal, Iowa
29	Bonebrake, Jean	Diagonal, Iowa
	11 Buller, Peter E.	Luton, Iowa
	25 Burkhart, Paul	East Earl, Pennsylvania
16	Cain, Mrs. Edna L.	Omaha, Nebraska
	17 Classen, Martin F.	Meade, Kansas
	27 Clausen, Vivian	Center, Nebraska
	28 Dick, Mary	Mountain Lake, Minnesota
	21 Dieck, Ann	Whitewater, Kansas
29	Dirks, Mrs. Marian	Shelby, Nebraska
	28 Dirks, Virgil	Halstead, Kansas
	25 Edwards, Valla	Crab Orchard, Nebraska
	19 Eveland, John	Backus, Minnesota
	15 Ewert, Frank H.	Avon, South Dakota
	25 Fast, Fernando	Delft, Minnesota
	26 Fast, Sam	Delft, Minnesota
	26 Flickner, Carl	Kingman, Kansas
	27 Friesen, Ben	Mountain Lake, Minnesota
	28 Friesen, Roland	Buhler, Kansas
	18 Goering, Selma	Castleton, Kansas
	26 Goertz, Reuben	Ogallala, Nebraska
	29 Goertzen, Clayton	Windom, Minnesota
	23 Graber, Harold	Pretty Prairie, Kansas
	25 Habegger, Glen	Berne, Indiana
	22 Habegger, Mrs. Ruth	Berne, Indiana
	23 Harder, Arthur	Whitewater, Kansas
	29 Heidner, Donald	Wolf Point, Montana
26	Heidner, Mrs. Velma	Wolf Point, Montana
	25 Hoch, Elvern	Wolf Point, Montana
	27 Hofer, Darlene	Blunt, South Dakota
	23 Jantz, Dan	Drake, Saskatchewan, Canada
	21 Jantz, Lillian	Drake, Saskatchewan, Canada
	28 Juett, Aaron	Aurora, Nebraska
	28 Klassen, Anne	Mountain Lake, Minnesota
	22 Kliewer, Archie	Frazier, Montana
	20 Koehn, Clifford	Carnegie, Oklahoma
	23 Kopper, Frances	Bakersfield, California
	29 Krahn, Emil	Langdon, North Dakota
	25 Kroeker, Bernhard	Dallas, Oregon
	24 Leonard, Leland	Manhattan, Kansas
	28 Linscheid, Arleen	Butterfield, Minnesota
	28 Loewen, Alfred	Mountain Lake, Minnesota
26	Lohrenz, Mrs. Bette Lou	Findlay, Ohio
	25 Lohrenz, Norman	Orienta, Oklahoma
	30 Mowry, Wonevia	Underwood, Iowa
18	Olfert, Marie	Frazier, Montana
	19 Penner, John	Salix, Iowa
	18 Peters, John	Monroe, Washington
21	Pue, Gladys	Brandon, Manitoba, Canada
25	Quenzer, Mrs. Ella	Dallas, Oregon
18	Quenzer, Paul	Pasa Robles, California

25	Ross, Kenneth	Harvard, Nebraska
28	Roth, Lynn	Benton, Kansas
25	Schrock, Daniel	Kalona, Iowa
26	Schroeder, Loyd	Floodwood, Minnesota
29	Senner, Beatrice	Monroe, Washington
27	Siebert, Johnny	Salix, Iowa
20	Smith, Vernon	Creighton, Nebraska
26	Stucky, Gene	Monroe, Washington
28	Thiessen, Dorothy	Whitewater, Kansas
26	Thiessen, Evelyn	Inman, Kansas
28	Thomas, Leo	Ringwood, Oklahoma
29	Uppendahl, Martin	Lamar, Missouri
28	Vogt, Helen	Hesston, Kansas
28	Wall, Linda	Bingham Lake, Minnesota
27	Warkentin, Sarah	Mountain Lake, Minnesota
28	Zuercher, Dwight	Benton, Kansas

**Under-Graduates**

25	Andres, Dorothy	Meadow Lake, Saskatchewan, Canada
22	Arends, A.A.	Jewell, Iowa
31	Baerg, Marie	Butterfield, Minnesota
19	Baker, Robert	Iowa Falls, Iowa
28	Balzer, Berdina	Bingham Lake, Minnesota
30	Barkman, Leona	Steinbach, Manitoba, Canada
29	Barkman, Verda	Henderson, Nebraska
34	Bartel, Luverne	Wales, North Dakota
30	Berg, Orrin	Omaha, Nebraska
30	Bergen, Gerald	Goltry, Oklahoma
31	Bergen, Janette	Goltry, Oklahoma
30	Boehr, Mary Ellen	Omaha, Nebraska
25	Boschult, Duane	Fontanelle, Nebraska
29	Boschult, Mrs. Lola	Waterloo, Nebraska
31	Briscoe, Charles	Kansas City, Missouri
25	Brodhead, Russell	Anoka, Minnesota
24	Brown, Gertrude	Mountain Lake, Minnesota
29	Brown, Imageyne	Sycamore, Ohio
27	Buller, Norman	Orienta, Oklahoma
29	Burton, Benola	Kansas City, Missouri
23	Campbell, Edward	Omaha, Nebraska
28	Classen, Ann	Meade, Kansas
26	Classen, Martha	Meade, Kansas
31	Clipperton, Joyce	Butterfield, Minnesota
30	Clipperton, Vernon	Butterfield, Minnesota
30	Cole, Lorene	Broken Bow, Nebraska
30	Cordts, Robert	Inman, Kansas
32	Dalke, Alieda	Salix, Iowa
31	Abbott, Donna	Crawford, Nebraska
27	Dalke, Dan	Newport, Washington
21	Davis, Flora	Toppenish, Washington
31	Decker, Keith	Meno, Oklahoma
30	Decker, Rosalie	Meno, Oklahoma
31	Dick, Marie	Dallas, Oregon
29	Dietz, Arlene	Quakertown, Pennsylvania
27	Dodson, Dean	Venango, Nebraska
23	Ediger, Herbert	Inman, Kansas
27	Edwards, Daniel	Omaha, Nebraska
30	Eitel, Ruth	Timken, Kansas
31	Emery, Clifford	Backus, Minnesota
29	Emery, Donald	Backus, Minnesota

57

27	Emmert, Donald	Sweet Home, Oregon
12	Enns, Mrs. Alma	Meade, Kansas
28	Enns, Arthur	Meade, Kansas
14	Enns, Edward	Meade, Kansas
31	Epp, Harold	Henderson, Nebraska
27	Epp, Martha	Whitewater, Kansas
31	Erickson, Betty	Butterfield, Minnesota
28	Ernst, Lorraine	O'Niell, Nebraska
26	Eslinger, Everett	Lincoln, Kansas
22	Esterline, Grace	Millerstown, Pennsylvania
30	Ewert, Irene	Omaha, Nebraska
26	Ewert, Leonard	Drake, Saskatchewan, Canada
31	Ewert, Ralph	Omaha, Nebraska
19	Ewy, Arlo	Cleveland, Kansas
27	Fast, Lila	Delft, Minnesota
29	Fleming, Ruth	Trumbauersville, Pennsylvania
31	Flickner, Mildred	Kingman, Kansas
24	Frey, Albert	Steinbach, Manitoba, Canada
30	Friesen, Adena	Meade, Kansas
25	Friesen, Arline	Buhler, Kansas
27	Friesen, Isaac	Meade, Kansas
22	Friesen, Margaret	Meade, Kansas
30	Friesen, Paul	Buhler, Kansas
30	Fuls, Harvey	Kingston, Arkansas
28	Garmatter, Mary Jane	Bluffton, Ohio
30	Gartner, Lois	Ayr, Nebraska
28	Geiger, Wallace	Pandora, Ohio
29	Geiger, Wava	Pandora, Ohio
31	Gilbert, Art	Omaha, Nebraska
30	Goossen, Joseph	Canton, Kansas
30	Goossen, Paul	Colby, Kansas
31	Goossen, Susie	Colby, Kansas
28	Graber, Mrs. Gladys	Pretty Prairie, Kansas
31	Griffin, Bruce	Omaha, Nebraska
31	Hanson, Charles	Concord, Nebraska
30	Hanson, Raymond	Concord, Nebraska
05	Harder, John	Meade, Kansas
26	Harms, Vernon	Meade, Kansas
31	Harms, Wilma	Cordell, Oklahoma
29	Hedman, Alice	Bakersfield, California
25	Heyle, Mary Ellen	Omaha, Nebraska
30	Hiebert, Lela	Hillsboro, Kansas
31	Hofer, Goldie	Carpenter, South Dakota
25	Hofer, Johnny	Bridgewater, South Dakota
30	Hofer, Marie Ann	Huron, South Dakota
31	Hofer, Thelma	Dolton, South Dakota
22	Hoffman, Wilma	Richfield, Pennsylvania
29	Hofstetter, Lyman	Bluffton, Ohio
16	Hofstetter, Ruth	Versailles, Missouri
31	Holmes, Luella Jane	Creighton, Nebraska
31	Isaac, Verna	Meade, Kansas
31	Ivey, Shirley	Omaha, Nebraska
30	Jantz, Carl	Ringwood, Oklahoma
49	Jantz, Elvera	Inola, Oklahoma
30	Jantz, Nona	Newton, Kansas
26	Janz, Arthur	Steinbach, Manitoba, Canada
32	Janzen, LaVernae	Madrid, Nebraska
25	Janzen, Norma	Mountain Lake, Minnesota

28	Johnson, Hazel	Bloomfield, Nebraska
29	Johnson, Ray	Omaha, Nebraska
13	Keifer, Verna	Bluffton, Ohio
31	Klaassen, Ethel	Mountain Lake, Minnesota
14	Klassen, Albert	Hillsboro, Kansas
24	Klassen, Bernice	Lehigh, Kansas
24	Kleinsasser, Alvin	Minot, North Dakota
27	Kliewer, John	Frazer, Montana
30	Kline, Esther	Perkasie, Pennsylvania
30	Koehn, Dahna	Enid, Oklahoma
30	Koehn, Glenn Dale	Halstead, Kansas
29	Koehn, Innes	Halstead, Kansas
29	Koehn, Robert	Carnegie, Oklahoma
31	Koehn, Ruby	Enid, Oklahoma
25	Kolbo, Kenneth	Callaway, Nebraska
29	Kopper, Florence	Bakersfield, California
24	Krahn, Alvin	Langdon, North Dakota
1877	Krehbiel, Erich	Newport, Washington
32	Krehbiel, Joan	Newport, Washington
30	Krehbiel, Mary Ellen	Newport, Washington
07	Kroeker, Abram	Mountain Lake, Minnesota
28	Kroeker, Elizabeth	Dallas, Oregon
21	Kroeker, Pete	Jansen, Nebraska
21	Landis, Clarence	Quakertown, Pennsylvania
20	Leatherman, Raymond	Pipersville, Pennsylvania
28	Lehmann, Arno	Berlin, Germany
31	Lehmann, Paul	Baldwin Park, California
28	Limas, Elo	Omaha, Nebraska
31	Linscheid, Lucile	Butterfield, Minnesota
27	Loewen, Katherine	Steinbach, Manitoba, Canada
25	Loewen, Sarah	Mountain Lake, Minnesota
30	Lohrenz, Lorraine	Orienta, Oklahoma
29	Long, Willadene	Superior, Nebraska
19	Luce, William	Omaha, Nebraska
22	Mackey, Lona	Shelton, Nebraska
28	Malmberg, Genevieve	Pender, Nebraska
29	Marley, Jean	Omaha, Nebraska
25	McCroskey, William	Fredonia, Kansas
18	Miller, Raymond	Quakertown, Pennsylvania
27	Munger, Kenneth	Kadoka, South Dakota
30	Nelson, Wayne	Stromsburg, Nebraska
24	Neufeld, Art	Wolf Point, Montana
30	Nickel, Kenneth	Clinton, Oklahoma
23	Nickel, Ruth	Mountain Lake, Minnesota
30	Nightengale, Mildred	Fort Cobb, Oklahoma
12	Nussbaum, Mrs. Elizabeth	Berne, Indiana
17	Nussbaum, Tillman	Berne, Indiana
31	Oman, Frances	Gothenburg, Nebraska
30	Pauls, Ruby	Dallas, Oregon
30	Penner, Henry	Lushton, Nebraska
27	Penner, Walter	Lushton, Nebraska
26	Peters, Dorothy E.	Langham, Saskatchewan, Canada
27	Peters, Dorothy M.	Larslan, Montana
21	Peters, Pete	Aberdeen, Saskatchewan, Canada
25	Quenzer, Lydia	Pasa Robles, California
29	Quiring, Blondeen	Weatherford, Oklahoma
32	Quiring, Lavina	Hampton, Nebraska

57



30	Quiring, Lorena	Dallas, Oregon
15	Quiring, Peter	Mountain Lake, Minnesota
31	Ratzlaff, Elaine	Meno, Oklahoma
26	Ratzlaff, Harry	Newton, Kansas
30	Regier, Anna Mae	Mountain Lake, Minnesota
29	Regier, Bill	Inola, Oklahoma
22	Reimer, Clarence	Steinbach, Manitoba, Canada
29	Reimer, Peter	Steinbach, Manitoba, Canada
26	Reimer, Raymond	Whitewater, Kansas
24	Reimer, Rollin	Steinbach, Manitoba, Canada
26	Reimer, Viola	Cordell, Oklahoma
30	Rempel, Romelda	Steinbach, Manitoba, Canada
29	Rutschman, Orville	Hesston, Kansas
28	St. John, Ruth	Odin, Minnesota
31	Sawatzky, Leroy	Mountain Lake, Minnesota
28	Schanely, Leon	Quakertown, Pennsylvania
05	Schmidt, Albert	Omaha, Nebraska
26	Schmidt, Annie	Cordell, Oklahoma
31	Schmidt, Dennis	Omaha, Nebraska
31	Schmidt, Edythe	Goessel, Kansas
32	Schmidt, Eleanor	Meno, Oklahoma
31	Schmidt, Leo	Carnegie, Oklahoma
18	Schmidt, Norma	Newton, Kansas
29	Schmidt, Wilbur	Dallas, Oregon
31	Schrag, Anna Marie	McPherson, Kansas
30	Schrag, Herbert	Pretty Prairie, Kansas
29	Schrock, Fred	Kalona, Iowa
24	Schroeder, LaVerna	Canton, Kansas
30	Schroeder, LeRoy	Floodwood, Minnesota
30	Schultz, Ivan	Meno, Oklahoma
31	Senner, Edward	Monroe, Washington
26	Shackleford, Marian	Omaha, Nebraska
05	Siebert, Abraham	Omaha, Nebraska
06	Siebert, Mrs. A.C.	Omaha, Nebraska
30	Siebert, Rosalie	Omaha, Nebraska
15	Skinner, Orrin	Omaha, Nebraska
29	Stahl, Vilene	Yale, South Dakota
30	Stanke, Irvin	Ashland, Nebraska
29	Stein, Marie	Omaha, Nebraska
23	Stucky, Ewald	Monroe, Washington
29	Stucky, Sam	Monroe, Washington
29	Stucky, Vernard	Moundridge, Kansas
31	Suderman, John	Mountain Lake, Minnesota
29	Suderman, Vera	Winnipeg, Manitoba, Canada
29	Sundermeyer, Dora	Backus, Minnesota
29	Sundermeyer, Doris	Backus, Minnesota
26	Swain, Kenneth	Omaha, Nebraska
27	Thiessen, Harry	Dallas, Oregon
30	Thomas, Alvin	Ringwood, Oklahoma
28	Tieszen, Melvin	Jansen, Nebraska
28	Toews, Agnes	Dallas, Oregon
19	Toews, Edward	Dallas, Oregon
26	Toye, Albert	Omaha, Nebraska
31	Toye, Mrs. Anna	Omaha, Nebraska
27	Tschetter, Donald	Huron, South Dakota
31	Tschetter, Eva Ruth	Omaha, Nebraska
22	Tschetter, Pete	Carpenter, South Dakota
30	Tschiegg, Allan	Bluffton, Ohio

58

29 Tschiegg, Wanda	Bluffton, Ohio
30 Unruh, Matilda	Enid, Oklahoma
29 Unruh, Nolan	Carnegie, Oklahoma
29 Unruh, Paul	Newton, Kansas
29 Van Ness, Darline	Omaha, Nebraska
29 Veer, Ted	Langdon, North Dakota
24 Vetter, Lenita	Effingham, Kansas
27 Vogt, Verna	Hesston, Kansas
31 Voth, James	Orienta, Oklahoma
23 Wall, Esther	Mountain Lake, Minnesota
28 Wall, Harry	Mountain Lake, Minnesota
30 Walter, June	Carpenter, South Dakota
29 Warkentin, Anne	Mountain Lake, Minnesota
25 Warkentin, Reuben	Langham, Saskatchewan, Canada
30 Wedel, Margie	Ringwood, Oklahoma
25 Wedel, Palmer	Yale, South Dakota
14 Welshons, Donald	Des Moines, Iowa
32 West, Carroll	Venango, Nebraska
30 West, Dolores	Venango, Nebraska
29 Wiebe, Elsie	Aberdeen, Idaho
20 Wiebe, Franklin	Omaha, Nebraska
10 Wiens, Daniel	Meade, Kansas
31 Wiens, Ed	Meade, Kansas
30 Wiens, Lois	Bingham Lake, Minnesota
31 Wiens, Matilda	Mildred, Minnesota
28 Wilting, Myrtle	Cleveland, Ohio
30 Wilting, Nola	Cleveland, Ohio
30 Winsinger, Amy	Pretty Prairie, Kansas
27 Winsinger, Elsie	Pretty Prairie, Kansas
22 Wipf, Susie	Huron, South Dakota
31 Wuthrich, Doris	Augusta, Kansas
29 Wuthrich, Lavina	Whitewater, Kansas
18 Zuercher, Kenneth	Lima, Ohio
19 Zuercher, Mrs. Maxine	Lima, Ohio

## Analysis of Enrollment

<b>By States</b>					
Arkansas	1	Minnesota	41	Oklahoma	31
California	6	Missouri	4	Oregon	11
Idaho	1	Montana	8	Pennsylvania	10
Indiana	4	Nebraska	64	South Dakota	13
Iowa	12	North Dakota	6	Washington	11
Kansas	63	Ohio	13	Canada	17
				Germany	1

<b>By Denomination</b>			
Assembly of God	1	Independent Mennonite	5
Baptist	10	Krimmer Mennonite Brethren	10
Brethren	1	Lutheran	3
Christian	1	Mennonite Brethren	11
Christian Missionary Alliance	5	Methodist	5
Congregational	2	Nazarene	1
Elim Missionary Assembly	1	Old Mennonite	3
Evangelical Covenant Mission	1	Open Bible Standard	1
Evangelical Free Church	3	Pentecostal	2
Evangelical Mennonite Brethren	42	Presbyterian	12
Evangelical United Brethren	2	Interdenominational	18
Free Methodist	1	Unaffiliated	11
General Conference Mennonite	165		

# ALUMNI ASSOCIATION

An alumni association was organized in May, 1947, to promote the interest of the graduates in the Grace Bible Institute and in each other's work. Officers elected for the year 1948-49 are:

President ..... Calvin Flickinger  
 Vice President ..... Cornie Classen  
 Secretary-Treasurer ..... Olivia Schroeder

The association meets annually on the Monday of Commencement Week to conduct its business and to have a time of reunion and fellowship. New graduates are received into membership of the association at that time.

## ALUMNI REGISTER

### Class of 1945

Geiger, Lucille (Mrs. Vernon H. Buller), President ..... Goshen, Indiana  
 Regier, Wanda, Secretary ..... Whitewater, Kansas  
 Kroeker, Aganetha F., Treasurer ..... Jansen, Nebraska

### Class of 1946

Neufeld, Bertha, President ..... Atlanta, Georgia  
 Barkman, Elinor (Mrs. Charles E. Boehr), V. President ... Winona Lake, Indiana  
 Regier, Elsie (Mrs. Pete Z. Friesen), Secretary ..... French Morocco, Africa  
 Regier, Hilda, Treasurer ..... Meno, Oklahoma  
 Goossen, Walter D. .... Hotevilla, Arizona  
 Janz, Verna ..... French Morocco, Africa  
 Schmidt, Arthur ..... Meno, Oklahoma  
 Thomas, Marie ..... Omaha, Nebraska

### Class of 1947

Dirks, Harold K., President ..... Ringwood, Oklahoma  
 Augsburger, Wilma, V. President ..... Bluffton, Ohio  
 Geiger, Treva, Secretary ..... Chicago, Illinois  
 Richert, Ruth (Mrs. Russell Jones), Treasurer ..... Lincoln, Nebraska  
 Albrecht, Harry ..... Hanston, Kansas  
 Boehr, Charles E. .... Winona Lake, Indiana  
 Dick, Dorothy ..... Deceased  
 Dick, Gwendolyn ..... Newton, Kansas  
 Fife, Lillian ..... Los Angeles, California  
 Friesen, Sara ..... Chicago, Illinois  
 Hammerly, Daniel ..... Omaha, Nebraska  
 Harder, Wilma ..... French Morocco, Africa  
 Hilty, Myron D. .... Winton, California  
 Janz, Winnona ..... Beatrice, Nebraska  
 Landis, Dorothy ..... Newton, Kansas  
 Linscheid, Doris (Mrs. Ira R. Thiessen) ..... Dinuba, California  
 Penner, Esther ..... Omaha, Nebraska  
 Penner, Martha (Mrs. Henry Hockel) ..... Minneapolis, Minnesota  
 Penner, Sarah ..... Newton, Kansas  
 Reed, Marilyn (Mrs. Wendell Seward) ..... Waco, Texas  
 Reimer, Edward B. .... Omaha, Nebraska  
 Schultz, Edna ..... Alderson, Oklahoma  
 Siebert, Esther ..... Anglo-Egyptian Sudan, Africa  
 Spent, Evangeline ..... Munich, North Dakota  
 Thieszen, Marie ..... Alderson, Oklahoma

Voth, Elma ..... Ecuador, South America  
 Wall, Helen (Mrs. Louis Hoffman) ..... Portland, Oregon  
 Warkentin, Hilda ..... Newton, Kansas  
 Welty, Elaine ..... Goshen, Indiana  
 Wollman, Lena ..... Huron, South Dakota

**Class of 1948**

Wiens, Robert, President ..... Wheaton, Illinois  
 Geiger, Arvilla, V. President ..... Los Angeles, California  
 Siebert, Ruby (Mrs. Bernard Thiessen), Secretary ..... Goshen, Indiana  
 Flickinger, Calvin, Treasurer ..... Newton, Kansas  
 Enns, Leona (Mrs. Samuel Entz) ..... Conge Belge, Africa  
 Fast, Anna ..... Goshen, Indiana  
 Fast, Lena (Mrs. Hugh Gookin) ..... Portland, Oregon  
 Friesen, Pete Z. .... French Morocco, Africa  
 Garbers, Ruth (Mrs. Richard Tschetter) ..... Omaha, Nebraska  
 Gross, Katherine ..... Onida, South Dakota  
 Jantz, Ruth ..... Newton, Kansas  
 Johnson, Forrest W. .... Omaha, Nebraska  
 Jost, David M. .... Atoka, Oklahoma  
 Klassen Gladys E. (Mrs. Pete Buller) ..... New York, New York  
 Kliever, Helen ..... Dallas, Oregon  
 Krigor, Marie (Mrs. Carl Flickner) ..... Omaha, Nebraska  
 Kroeker, Katherine ..... Kansas City, Missouri  
 Linscheid, Geneva ..... Minneapolis, Minnesota  
 Penner, Mrs. Beulah ..... Omaha, Nebraska  
 Penner, Elizabeth ..... Central Province, India  
 Penner, Louise ..... Lushton, Nebraska  
 Quiring, Ella (Mrs. Paul Quenzer) ..... Omaha, Nebraska  
 Ratzlaff, Alvin ..... Orienta, Oklahoma  
 Ratzlaff, M. Martha ..... Hyderabad, India  
 Regier, Mrs. Gertrude ..... Upland, Indiana  
 Regier, Marie ..... Coalgate, Oklahoma  
 Regier, Rufus ..... Upland, Indiana  
 Rempel, Eldora ..... Upland, Indiana  
 Ryan, Roselyn (Mrs. Gerhard Friesen) ..... Mankato, Minnesota  
 Schrag, Mary ..... Newton, Kansas  
 Smith, Mary ..... Coalgate, Oklahoma  
 Thiessen, Helen ..... Dallas, Oregon  
 Thiessen, Ira ..... Dinuba, California  
 Toews, Emma ..... Munich, North Dakota  
 Unruh, Joanne (Mrs. Orlando Klassen) ..... Siloam Springs, Arkansas  
 Warkentin, Viola ..... Edinburg, Texas  
 Wollmann, Mary ..... Goshen, Indiana

**Class of 1949**

Walker, Thomas R., President ..... Delft, Minnesota  
 Thiessen, Bernard, V. President ..... Goshen, Indiana  
 Jantz, Ethel Marie, Secretary ..... Kansas City, Missouri  
 Thiessen, Susan, Treasurer ..... Whitewater, Kansas  
 Baerg, Anna Ruth ..... Butterfield, Minnesota  
 Baergen, Ernest E. .... Medford, Oklahoma  
 Classen, Cornie ..... Marion, South Dakota  
 Dahl, Asher ..... Chicago, Illinois  
 Dalke, Ruby ..... Salix, Iowa  
 Derksen, Henry ..... Upland, Indiana  
 Diamond, Paul W. .... Omaha, Nebraska  
 Dick, Lilah ..... Munich, North Dakota  
 Enns, Ruby ..... Upland, Indiana  
 Entz, Samuel E. .... Congo Belge, Africa  
 Fast, Mrs. Anna Belle ..... Omaha, Nebraska  
 Friesen, Gerhard ..... Mankato, Minnesota

Friesen, Olga	Omaha, Nebraska
Geiger, Lois (Mrs. Peter Voran)	Newton, Kansas
Graber, Anna	Pretty Prairie, Kansas
Graber, Ella	Pretty Prairie, Kansas
Hammerly, Dan	Omaha, Nebraska
Harder, Leonard	Glendive, Montana
Harms, Marie	Omaha, Nebraska
Hoffman, Louis H.	Portland, Oregon
Holmes, Mildred	Upland, Indiana
Jantz, Milton E.	Omaha, Nebraska
Jantz, Ruth Ethel	Omaha, Nebraska
Jantzen, Esther	Plymouth, Nebraska
Kangas, Esther (Mrs. Loyd Schroeder)	Omaha, Nebraska
Keeler, Melvin	Omaha, Nebraska
Liechty, Irena	Goshen, Indiana
Loewen, Mary	Briartown, Oklahoma
Neufeld, Albert	Arena, North Dakota
Neufeld, Annie	Omaha, Nebraska
Nickel, Gerhard, Jr.	Omaha, Nebraska
Olfert, Marie	Omaha, Nebraska
Pankratz, Ella	Omaha, Nebraska
Pauls, Mildred (Mrs. Robert Wiens)	Wheaton, Illinois
Peters, Elvin	Henderson, Nebraska
Pue, Gladys	Omaha, Nebraska
Regier, Dan G.	Alsen, North Dakota
Regier, Elmer	Upland, Indiana
Regier, Melvin	Mountain Lake, Minnesota
Reimer, Ronald	Omaha, Nebraska
Roth, Dean	Wheaton, Illinois
Schoenwald, Delores (Mrs. Pete Peters)	Omaha, Nebraska
Schrag, Ann (Mrs. Ben Friesen)	Omaha, Nebraska
Schroeder, Olivia	Omaha, Nebraska
Sprunger, Lyman W.	Doland, South Dakota
Stucky, Anna Marie	Monroe, Washington
Suderman, Malinda	Lincoln, Nebraska
Teske, Julia	Omaha, Nebraska
Toews, Edith (Mrs. Paul Burkhardt)	Omaha, Nebraska
Toews, Rudolf	Ringwood, Oklahoma
Tschetter, Richard	Omaha, Nebraska
Unruh, Myrtle	Enid, Oklahoma
Wall, Arnold	Salix, Iowa
Wall, Laura (Mrs. Kenneth Ross)	Omaha, Nebraska
Wall, Lillian (Mrs. Art Neufeld)	Omaha, Nebraska
Wiley, Ellis E.	Hawthorn, Nevada
Willie, Margaret	Butterfield, Minnesota

### Register of Evening School Students

Arends, Mrs. Ida	Krehbiel, Mrs. Erich
Baker, Mrs. Robert	Miller, Mrs. Ruth
Bergen, Pete J.	Nussbaum, Mrs. Elizabeth
Bergen, Mrs. Pete	Penner, Walter
Bond, Mrs. Anna	Reimer, Mrs. Elma
Cole, Lorene	Reimer, Mrs. Rosaline
Galda, Jaroslen	Rockwell, Clifford
Klassen, Mrs. Albert	Schmidt, Mrs. Lena
Krahn, Mrs. Alvin	

# THE EVENING SCHOOL

The Grace Bible Institute will continue to offer Evening Bible Study classes to those in Omaha who must be employed during the day. All courses will be taught by the regular faculty.

## Class Schedule

Classes meet on Monday or Thursday evenings from 7:00-8:45 p. m. for 2 credits and from 7:00-9:30 p. m. for 3 credits. Classes are so arranged that an Evening School student may enroll for either one or two evenings a week and earn from 2 to 6 hours of credit per semester.

## Description of Courses

Courses to be offered will be determined by the demand. They usually include classes in Personal Evangelism, Teacher Training, Bible Book Study, Missions, etc.

## Entrance Requirements

1. Approved Christian character; born again.
2. Age: 16 or over. Credits earned below the age of 18, unless a graduate of a four year high school, must be validated by a semester's attendance in the day school.
3. Application. Advance application is not required.
4. All Evening School students must agree to abide by the same general regulations as Day School students.

## Expenses

Tuition—\$5.00 per semester hour credit.  
Registration fee—\$2.00  
Late registration fee—\$1.00.

## Calendar (1950-1951)

### First Semester

September 7—Registration (7:00 p. m.)  
September 11—Classes begin.  
September 25—Last day of late registration.  
October 30-November 3—No classes. (Bible Conference Week)  
November 22—Thanksgiving vacation begins  
November 27—Classes resume  
December 20—Christmas vacation begins.  
January 4—Classes resume.  
January 15-19—Final Examinations.

### Second Semester

January 25—Registration (7:00 p. m.)  
January 29—Classes begin.  
February 12—Last day late registration.  
March 12-16—No Classes. (Missionary Rally Week)  
March 16—Easter vacation begins.  
March 29—Classes resume  
May 14-17—Final Examinations.  
May 20-23—School closing exercises.

## Auditing

Those who do not care to take their work for credit may, if they so choose, audit the classes for their own personal pleasure and benefit by payment of the auditor's fees. See page 24.



## *An Opportunity*

The work of the Grace Bible Institute is carried on in full dependence upon God. It is a faith work. As tuition charges are inadequate to cover the operating expenses, the continuance of the work depends upon the faithfulness of God's stewards.

To those who by their gifts have made this work possible, we express our sincere thanks. To those who would like to have a part in the training of workers for Christian service, we present this opportunity.

•

Address all correspondence to the

## **GRACE BIBLE INSTITUTE**

1515 South 10th Street

Omaha 8, Nebraska



